



BORAL BRICKS

100 YEARS OF BORAL BRICKS

1922 - 2022

Welcome

For any business, 100 years is a milestone as well as a landmark event. I have much pleasure in offering my congratulations and thanks to the wonderful people who continue to make Bowral Bricks what it is today – a successful and integral part of the Brickworks group of companies.

As a landmark event, turning 100 is merely a waypoint on a long and eventful journey. And if the past makes the present, then Bowral is building an equally vital future.

In all the time that Bowral Bricks has been part of the Brickworks family, I have watched its progress and achievements with growing pride.

Its name is a constant reminder of our quest for beautifully-crafted clay products used by homeowners and architects alike. All of us rightly know that the longevity of any business depends on so many factors. On the cusp of its second century, Bowral Bricks as an iconic brand will continue to typify elegance, style, beauty – and quality products. Meanwhile, Bowral Bricks will remain deeply attached to its people and the local community.

I invite you to share in celebrating this important birthday through our publication.



—
Lindsay Partridge AM
Managing Director Brickworks

Bowral Bricks is proud to have collaborated with some of Australia's leading architects over the last 100 years

Adam Mosses. Akin Atelier. Alison Dodds Architect. Architects EAT. Architectus. ArchitectsSmith. Arkhaus Studio. Bates Smart. Benn+Penna Architects. Blight Rayner Architects. BSPN Architecture. BVN. Candalepas Associates. Carter Williamson Architects. Chenchow Little. Clare Cousins Architects. Davis+Davis Architects. Deicke Richards. Design Delta Architects. DWP Suters. Ellivo. ES Design. Fieldwork. FJMT Studio. Fox Johnston. Fulton Trotter. Gehry Partners. Genesin Studio. Grieve Gillet Andersen. Inarc Architects. Iredale Pedersen Hook. Jackson Clements Burrows Architects. John Wardle Architects. JPE Design Studio. Kavellaris Urban Design. Kerry Hill Architects. Klopper+Davis Architects. Koichi Takada Architects. Liquid Blu Architects. Lyons Architects. MGS Architects. Mirjana Males Design. Mountford Architects. MGN Projects. NBRS Architecture. Neeson Murcutt+Neille. Nest. Nic Brunsdon. O'Neill Architecture. Office88. Oof! Architecture. Partners Hill. PBD Architects. Placement Studio. PMDL Architects+Design. Rachcoff Vella Architecture. Richards and Spence. Room on Fire. Rush Wright Associates. SJB. Shaun Lockyer Architect. Silvester Fuller. Smart Design Studio. Smith+Tracey Architects. SP Studio. Studio Bright. Those Architects. Tim Stewart Architects. Tribe Studio Architects. Turf Design Studio. Turner. Twofold Studio. Tzannes. UME Architects. Vanessa Wegner Architect. Vokes and Peters. Walter Brooke. WMK Architecture. Woods Bagot. WOWOWA Architecture.



Contents

01 Foreword	09
02 History	15
03 Projects	23
04 Catalogue	263
05 Index	275



01

Foreword

Brick is the most omnipresent material in my daily life. I have lived, for over 20 years in a house designed by architect Bruce Rickard, built in the late 1960s with convict bricks reclaimed from demolished Paddington terraces from the turn of the century. It is a multi-generational material which still appears exactly as installed over 55 years ago. Used both inside and out the brick leads the eye effortlessly from one space to the next and, within their controlled dimensions, delivers a rich patina of tonal imperfection. It is a quietly unpretentious material of unmistakable character, rather like Rickard himself.

I recall architect Hannah Tribe enthusing about brick – the fact that it fits in the hand and through its human scale it has the ability to transfer that humanity to the building form with the assistance of the skill and craft of trades. As architects apply their ingenuity, from Gehry’s apparent crumpling of the façade of the Dr Chau Chak Wing Building at UTS to Smart Design Studio’s Stokes 14, with its vaults and curves, it appears that brick can match architectural innovation and experimentation to push its performance and levels of execution.

It also allows the new to reference tradition without compromising its contemporary nature (Arc by Crown, Sydney by Koichi Takada Architects) to deliver tactility and porosity, (Kingsford Terrace, Corinda, O’Neill Architecture) and to be whimsical and playful (Hello House, Richmond, Oof! Architecture)

It can also take on an ambassadorial role, as Asher Galvin of BVN Architecture notes of the Australian Embassy in Bangkok, “Here, the humble Australian brick is elevated to the role of diplomat itself, casting and projecting to viewers of the embassy an image of a red clay continent.”

Bowral Bricks are celebrating an impressive milestone of 100 years and the projects recorded in this book, speak to the future of a material that endures while meeting the demands of the architectural profession with ongoing research and product development supporting new expressions and innovative thinking.

—

Karen McCartney
Architecture and Design Author



Preface

Architects aspire to design buildings of value, lasting beauty and functionality. Buildings that work, and buildings that make for better living. Buildings that use the best of brick in all its beauty. Some buildings – though not all – shine new light on our rapidly changing built environment. In this publication you'll find a showcase of Bowral Bricks at their very best.

Bowral Bricks celebrates its centenary in 2022, a turning point that marks one hundred years of continuous history, and more. What better way to sing the praises of iconic architectural projects than this short preface. All of the projects use Bowral's premium, dry pressed bricks which are widely specified in prestige projects throughout Australia and overseas.

02

History



History

The past informs the present. Indeed, there's a long and continuous history that explains how and why Bowral Bricks grew to what it has become today.

There's also an interesting backstory which begins in 1852 when John Frederick Baker arrived in Sydney from England. Unable to find work, he turned his hand to cutting sandstone in the lower Hunter Valley town of Morpeth, New South Wales. Asked by a local builder if he could make bricks, John said yes, on the basis that his wife, Mary, was a potter and knew about firing clay.

So began the Baker family's successful foray into brick manufacturing, with the firm of F. Bakers and Sons (11 of them), establishing Rayworth Brickyard at One Mile Creek near East Maitland. One of the sons, John Baker, is believed to have used semi-plastic machines from 1880, later introducing dry-press machines in 1907.

A CIRCA 1940

Aerial view of Bowral looking north towards Mt Gibraltar (The Gib) showing the Great Southern Railway Line and on the left of the line, Bowral Brickworks.



- 1922 In the aftermath of World War I, John F Baker's grandsons; Aubrey, Arthur, Charles, and Raymond purchased the fledgling Bowral Brickworks.
- 1922 The Baker boys built a 'Hoffman Kiln', a first in regional Australia outside the Sydney area. A technological marvel, this kiln had a constantly burning central fire allowing for continuous production.
- 1922 The Baker's established another successful brickworks in Parkes, NSW.
- CIRCA 1926 Orders flooded in and eventually one million bricks were supplied for the foundations of Parliament House.
- 1929 The catastrophic collapse in share prices on the Wall Street Stock Exchange in October 1929 severely affected Australia. Its building industry came to a standstill, with brickmakers some of the first to suffer. Bowral Bricks was no exception.
- 1934 Despite a brief period of economic recovery from about 1934 onwards, the Second World War put an end to house building in favour of war-related construction, once more throwing the industry into crisis.

- 1946 With better times in the immediate post-war years, two downdraft kilns were installed at Bowral in anticipation of a building resurgence which soon gathered pace.
- 1947 After the war the interests of the four Baker boys expanded into Port Stephens, Cowra and Orange.
- 1950 The four brothers were the only partners left and each expressed their wish to own their own brickworks.
- 1953 Bowral Bricks was passed onto Ronald 'Ron' Baker after Raymond died in 1953.
- CIRCA 1960 New equipment was imported from England and the United States, including a tunnel kiln from Germany which was installed by representatives of its European manufacturers.
- 1970 NSW government introduced laws to reduce airborne industrial pollution, putting an end to the use of coal as fuel in brick kilns.
- 1970 Ron Baker sold Bowral Bricks to the building firm of A.V. Jennings.

B 1922

View of the recently completed smoke stack and new kiln at Bowral Brickworks. The stack was built by James Robertson of Mittagong.



B



C

D CIRCA 1940

Workers at Bowral Brickworks.



D

1974 Cyclone Tracy devastated Darwin on Christmas Eve 1974.

Baker returned to work at Bowral again, producing millions more of its distinctive bricks for use in the rebuilding of the shattered city.

1984 Bowral Bricks changed hands yet again, its new owners being an organisation that went by the name, Nefco Nominees.

The new owners refurbished the plant, gearing production towards serving the more lucrative market in so-called architecture bricks, rather than the previous emphasis on common bricks for the residential housing market. This decision was to have a profoundly beneficial effect since it established a reliable supply source for government departments and architects involved in the fast-growing area of heritage work, restoration projects, and upmarket housing.

1990 The New family of Western Australia gained control of Bowral Bricks through its company, MBS Securities Pty Ltd.

1995 Bowral Bricks received development consent from Bowral Council to extend the adjacent shale quarry, securing supplies of clay and shale sufficient to last until 2040.

These deposits of Bringelly [or Ashfield] shale are the same deposits that run under the greater Sydney Basin. The varying bands of clays in the shale deposits yield bricks that match the distinctive colours of many heritage buildings in the Sydney-Newcastle region.

2001 Bowral Bricks was acquired by Brickworks Limited, which to this day continues to support and promote its iconic Bowral brand.

2007 One of the last surviving brickmasters, Robert 'Bob' Baker, a fifth-generation brickmaker whose great-great-grandfather was the John F. Baker referred to earlier, died aged 78.

PRESENT Bowral Bricks continues to be owned and operated by Brickworks Limited, supporting and supplying Australia's architectural and building market.

E 2013 Production of the bricks for Frank Gehry's Dr Chau Chak Wing Building in the NSW Bowral facility.



F 2013 Construction of Frank Gehry's iconic Dr Chau Chak Wing Building at the University of Technology Sydney.



G 2018 The famous Bowral Brick chimney towers over the factory of the same name with the Southern Highland rail line in the foreground in Bowral Australia.



03

Projects



‘We saw this as an opportunity for the ROC to assert itself as a piece of rail infrastructure, proudly adding to the Sydney Trains legacy of fine red brick buildings.’

William Smart, Smart Design Studio





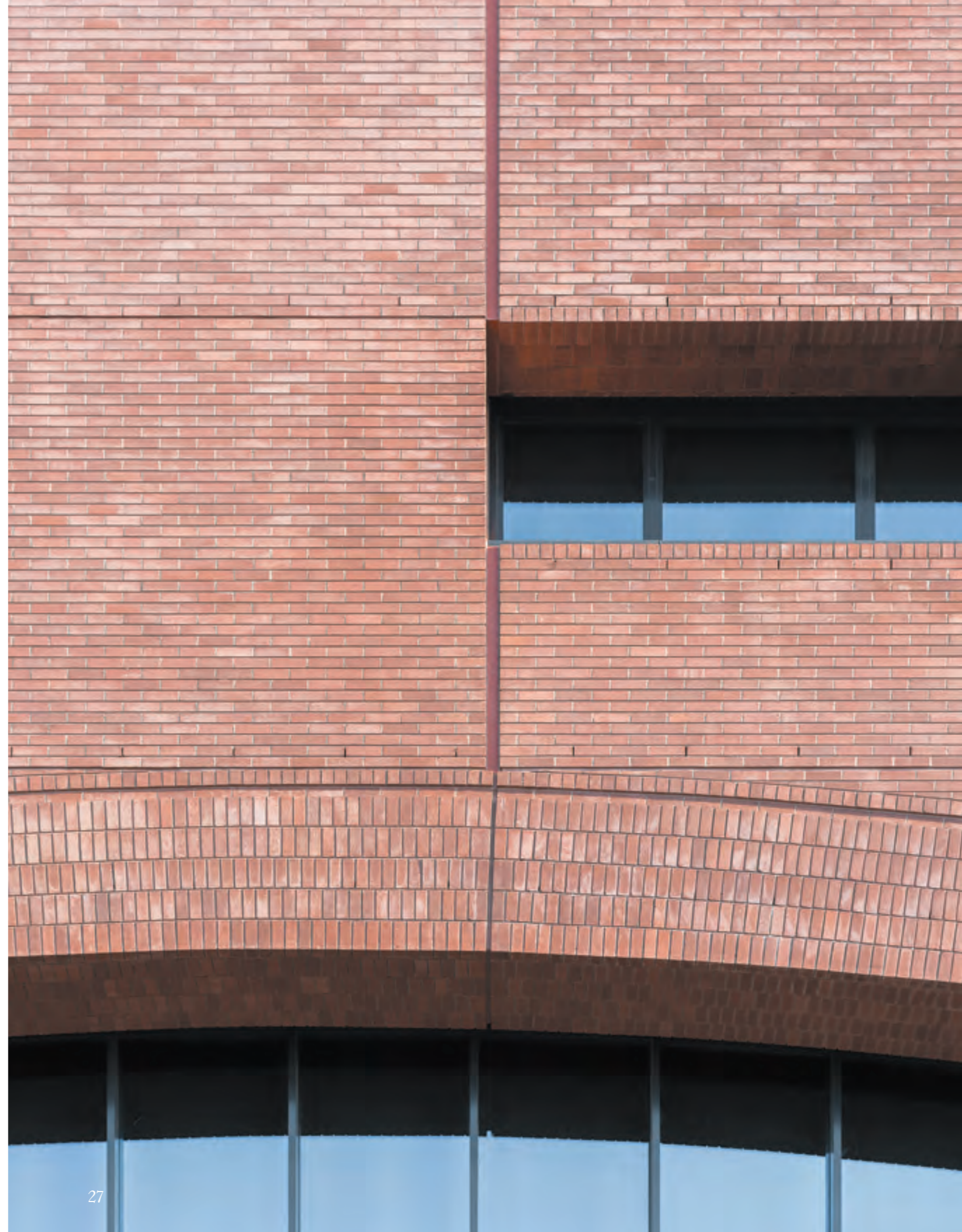
2018
Rail Operations Centre

LOCATION
Alexandria, NSW

ARCHITECT
Smart Design Studio
in collaboration with Jacobs

PHOTOGRAPHER
Martin Siegner and
Ross Honeysett

BRICK
Boral 76,
in Capitol Red







2013
Aperture House

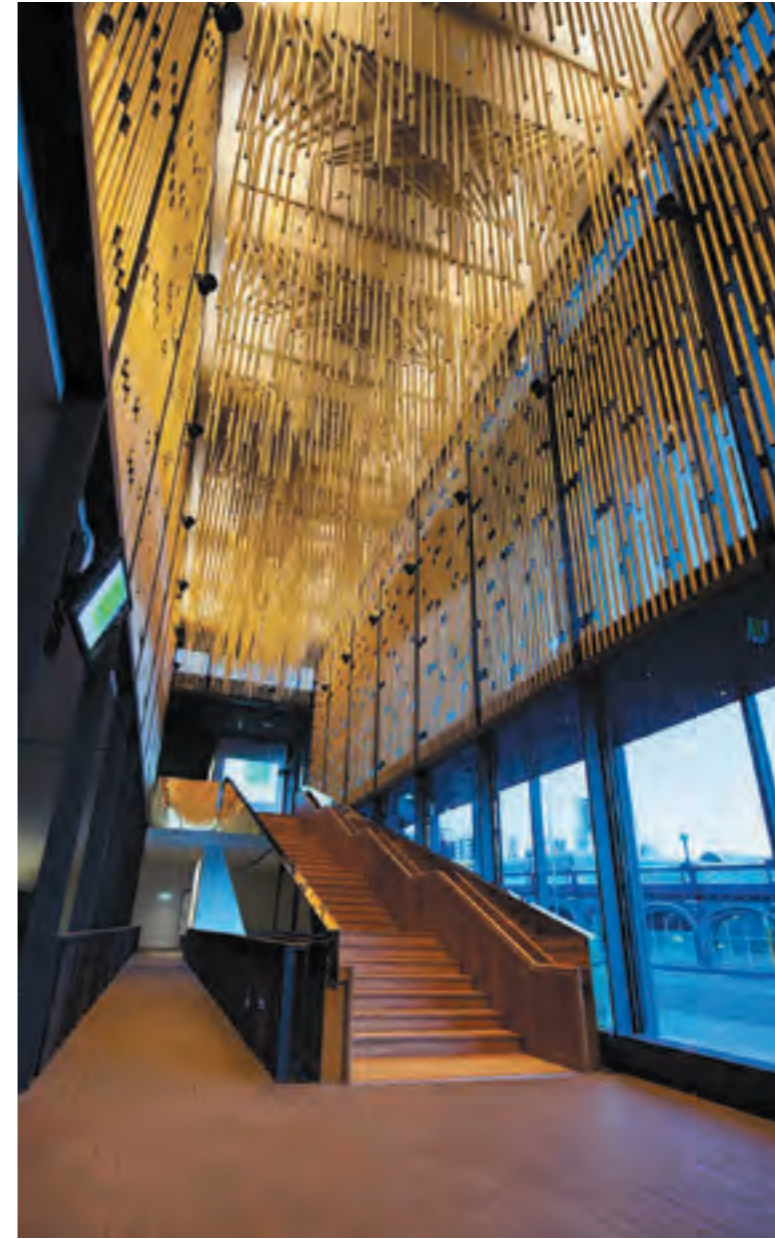
LOCATION
Highgate Hill, QLD

ARCHITECTS
Blight Rayner Architects
and Twofold Studio

PHOTOGRAPHER
Christopher Frederick Jones

BRICK
Bowral 76,
in Simmental Silver





2012
State Theatre Centre
of Western Australia

LOCATION
Perth, WA

ARCHITECT
Kerry Hill Architects

PHOTOGRAPHER
Supplied by Kerry Hill Architects

BRICK
Bowral 76,
in Bowral Blue

PAVER
Bowral London,
in Bowral Blue



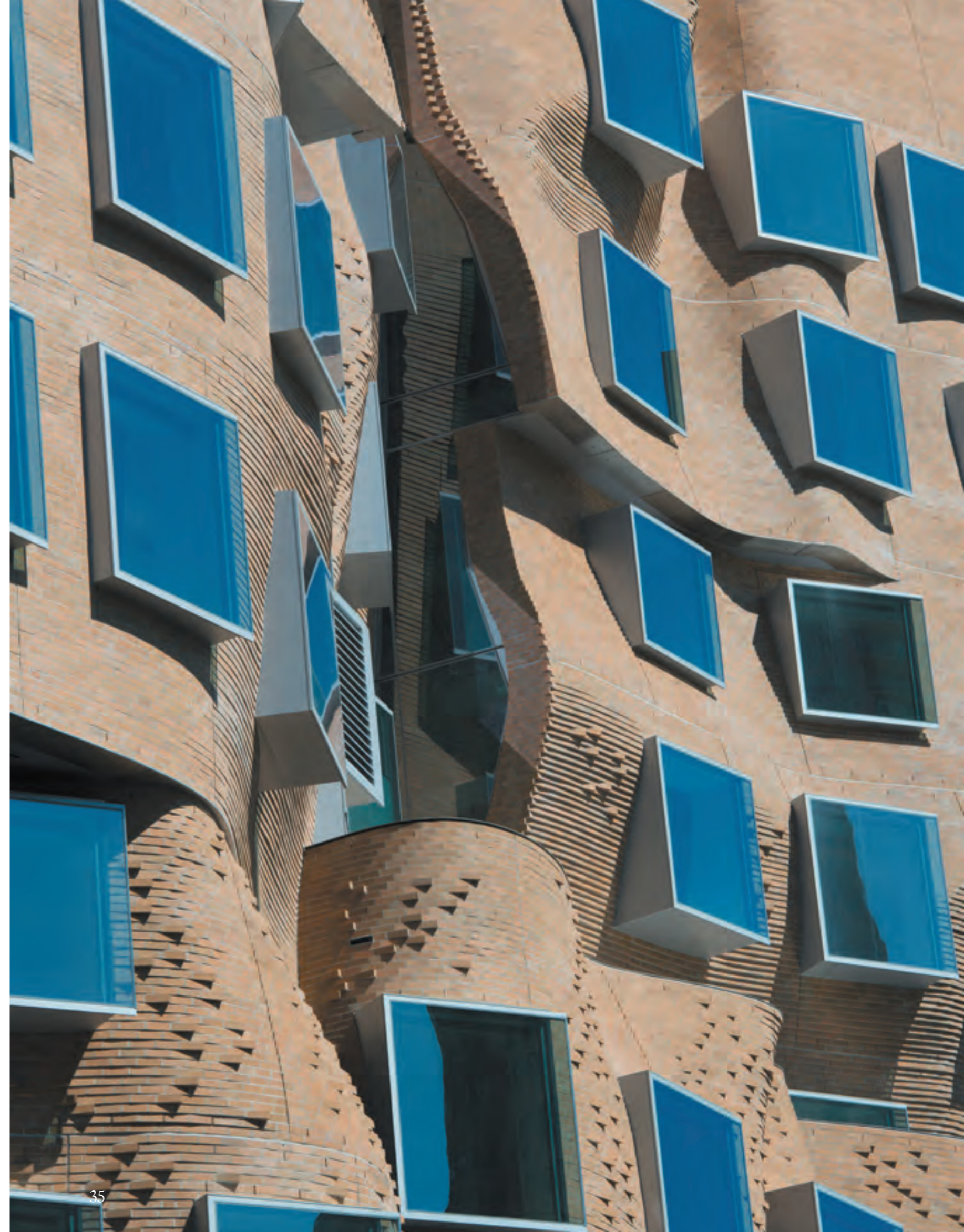
2014
Dr Chau Chak Wing Building,
University of Technology Sydney

LOCATION
Ultimo, NSW

ARCHITECT
Gehry Partners

PHOTOGRAPHER
Jacqui Dean

BRICK
Bowral 76,
in Limousin Gold
Bowral Shapes,
in Limousin Gold





UTS



2015
Thomas Carr College Chapel

LOCATION
Tarneit, VIC

ARCHITECT
Smith+Tracey Architects

BUILDER
Searle Bros

PHOTOGRAPHER
Chris Matterson

BRICK
Bowral 76,
in Bowral Blue and
Chillingham White



2021
Chisholm House

LOCATION
Avalon Beach, NSW

ARCHITECT
Architectsmith

BUILDER
Steve Harris Homes

PHOTOGRAPHER
Pablo Veiga

BRICK
Bowral 76,
in Simmental Silver



2012
Stewart House

LOCATION
Palm Beach, NSW

ARCHITECT
Chenchow Little

PHOTOGRAPHER
Katherine Lu

BRICK
Bowral 76,
in Chillingham White





2017
Rockingham Trade Training Centre

LOCATION
Rockingham, WA

ARCHITECT
Iredale Pedersen Hook

PHOTOGRAPHER
Dion Robeson

BRICK
Bowral 76,
in Chillingham White



2016
Agricultural Education Building,
Armidale University

LOCATION
Armidale, NSW

ARCHITECT
FJMT Studio

BUILDER
Cockram

PHOTOGRAPHER
Supplied by FJMT Studio

BRICK
Bowral 76,
in Bowral Brown





2017
York Street Residence

LOCATION
St Kilda West, VIC

ARCHITECT
Jackson Clements
Burrows Architects

PHOTOGRAPHER
Derek Swalwell

BRICK
Bowral 76,
in Brahma Granite





2016
Longueville House

LOCATION
Longueville, NSW

ARCHITECT
Vanessa Wegner Architect

BUILDER
MJ Minard Constructions

PHOTOGRAPHER
Katherine Lu

BRICK
Bowral 76,
in Chillingham White





2017
Crescent House

LOCATION
Seven Hills, QLD

ARCHITECT
Deicke Richards

MASON
Elvis & Rose

LANDSCAPE
Steven Clegg Design

PHOTOGRAPHER
Christopher Frederick Jones

BRICK
Bowral 76,
in Capitol Red and
Hereford Bronze



2017
Elsternwick House

LOCATION
Elsternwick, VIC

ARCHITECT
Clare Cousins Architects

PHOTOGRAPHER
Lisbeth Grosmann

BRICK
Bowral 76,
in Chillingham White







2021
Springvale Community Hub

LOCATION
Springvale, VIC

ARCHITECT
Lyons Architects

LANDSCAPE ARCHITECT
Rush Wright Associates

PHOTOGRAPHER
John Gollings

BRICK
Bowral 76,
in Capitol Red and St Paul's Cream

PAVER
Bowral London,
in Brahman Granite, Chestnut,
Maple and Silver Sands



2017
Leederville House

LOCATION
Leederville, WA

ARCHITECT
Klopper & Davis Architects

PHOTOGRAPHER
Dion Robeson

BRICK
Bowral 50,
in Gertrudis Brown



2017
Australian Embassy

LOCATION
Bangkok, Thailand

ARCHITECT
BVN

PHOTOGRAPHER
John Gollings

BRICK
Bowral 76,
in Embassy Red



'Here, the humble Australian brick is elevated to the role of diplomat itself, casting and projecting to viewers of the embassy an image of a red clay continent.'

Asher Galvin, BVN Architecture





2017
Gympie Aquatic Recreation Centre

LOCATION
Gympie, QLD

ARCHITECT
Liquid Blu Architects

PHOTOGRAPHER
Christopher Frederick Jones

BRICK
Bowral 76,
in Chillingham White





2013
Little Brick Studio

LOCATION
Abbotsford, VIC

ARCHITECT
Studio Bright

PHOTOGRAPHER
Peter Bennetts

BRICK
Bowral 76,
in Chillingham White





2018
Antica Pizzeria E Cucina

LOCATION
Adelaide, SA

ARCHITECT
Genesisin Studio

PHOTOGRAPHER
Brendan Homan

BRICK
Bowral 76,
in Simmental Silver



‘The Brick itself is a modular piece. We liked the colour of it, we liked the size. And for us it was about how can we push the material to how different we can do things.’

Ryan Genesisin, Genesisin Studio





2018
Garden Room House

LOCATION
North Fitzroy, VIC

ARCHITECT
Clare Cousins Architects

BUILDER
Provan Built

PHOTOGRAPHER
Tess Kelly

BRICK
Bowral 76,
in Chillingham White





2020
Garden House

LOCATION
Inverloch, VIC

ARCHITECT
Placement Studio
and Nest

BUILDER
Kaneworthy Constructions

PHOTOGRAPHER
Tom Ross

BRICK
Bowral 76,
in Chillingham White







2018
Arc by Crown

LOCATION
Sydney, NSW

ARCHITECT
Koichi Takada Architects

PHOTOGRAPHER
Martin Siegner

BRICK
Bowral 76,
in Bowral Blue and
Hereford Bronze





‘When you walk past the building, the brick is something that instantly reconnects us with this mother earth colour. It’s something that we should not forget; about the roots of our past, and the wonderful materiality that we can reinvest by building like this in the middle of the city.’

Koichi Takada, Koichi Takada Architects



2019
Wedged House

LOCATION
Princes Hill, VIC

ARCHITECT
Alison Dodds Architect

BUILDER
Lew Builder

PHOTOGRAPHER
Alex Reinders

BRICK
Bowral 76,
in Bowral Blue





2019
Henley Clays

LOCATION
Sydney, NSW

ARCHITECT
Benn+Penna Architects

PHOTOGRAPHER
Tom Ferguson

BRICK
Bowral 76,
in Simmental Silver

‘We strategically used the same brick for both wall and floor material, as well as on both enclosed and external spaces... By doing this, the line between outside and inside spaces is made ambiguous.’

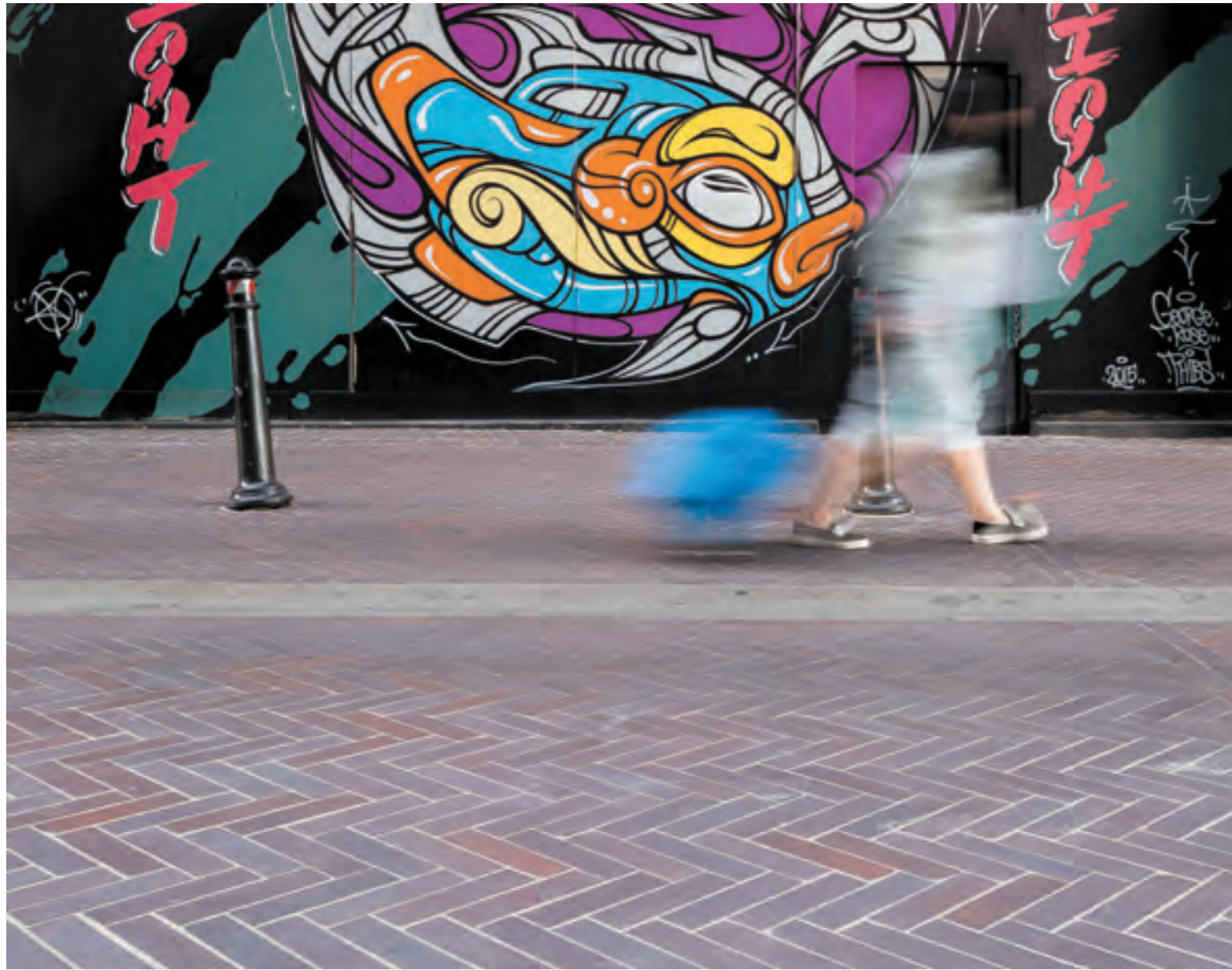
Sean Tran, Benn+Penna Architects



‘Bricks have an inherent landscape quality. They are robust with high thermal mass, but also feel modest.’

Sean Tran, Benn+Penna Architects





2005
Kensington Street

LOCATION
Surry Hills, NSW

LANDSCAPE ARCHITECT
Turf Design Studio

PHOTOGRAPHER
Alexander Mayes Photography

PAVER
Bowral Hamlet,
in Bowral Blue





2018
Kingsford Terrace

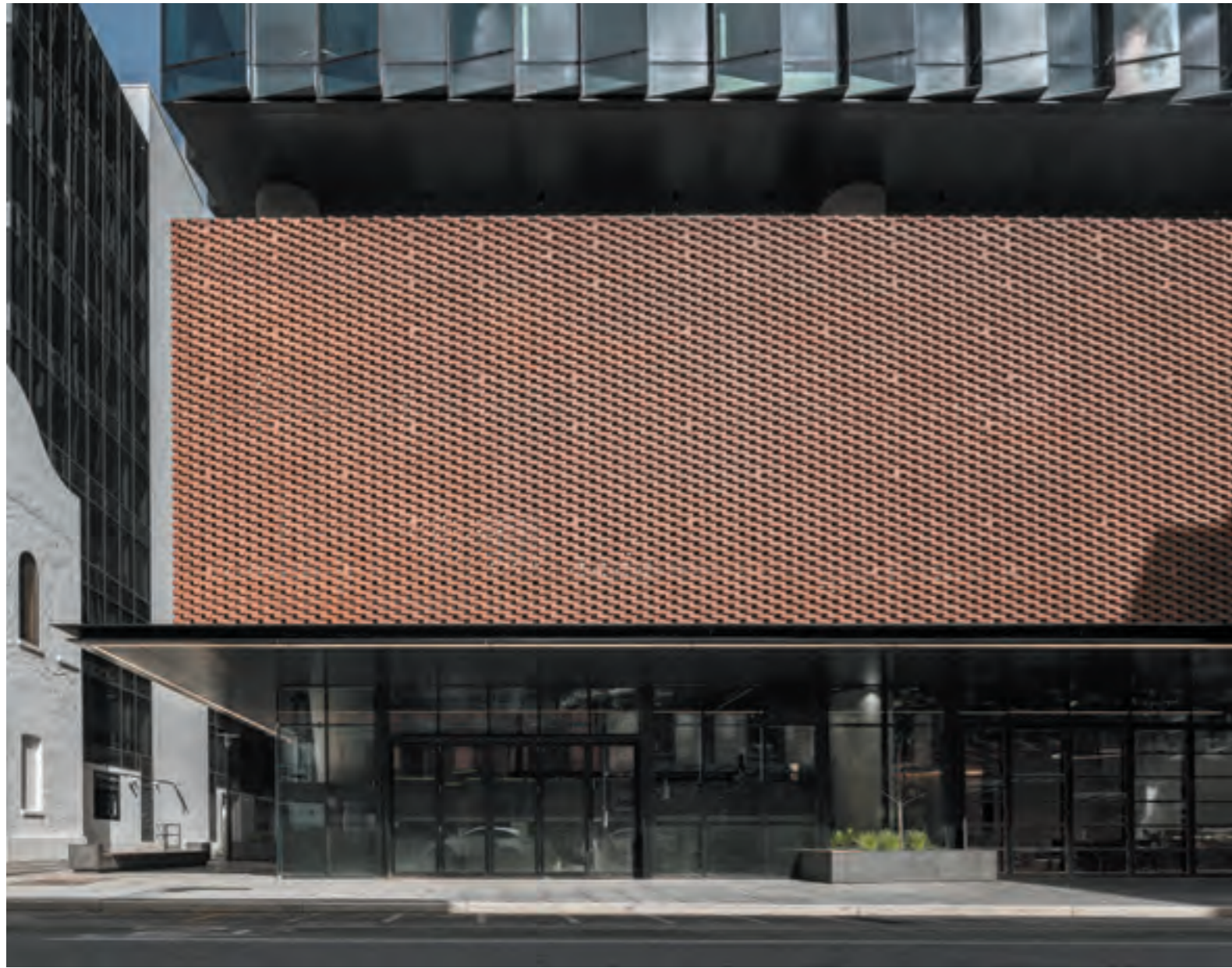
LOCATION
Corinda, QLD

ARCHITECT
O'Neill Architecture

PHOTOGRAPHER
Scott Burrows

BRICK
Bowral 76,
in Chillingham White





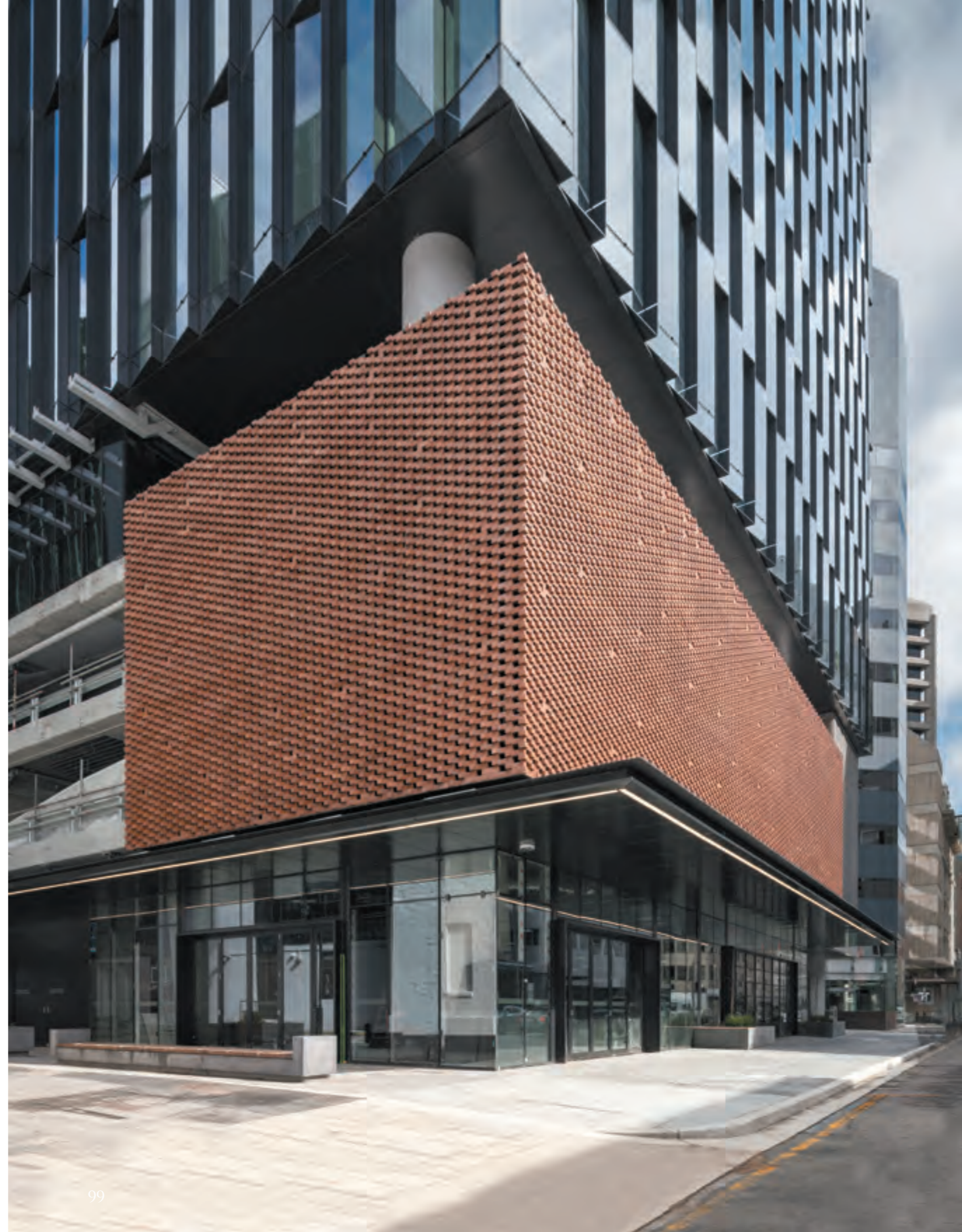
2022
83 Pirie Street

LOCATION
Adelaide, SA

ARCHITECT
Woods Bagot

PHOTOGRAPHER
Corey Roberts

BRICK
Bowral Shapes (custom),
in Hereford Bronze





2021
St Paul's Terrace

LOCATION
Fortitude Valley, QLD

ARCHITECT
Ellivo

BUILDER
McNab

PHOTOGRAPHER
Black Bee

BRICK
Bowral 76,
in Gertrudis Brown



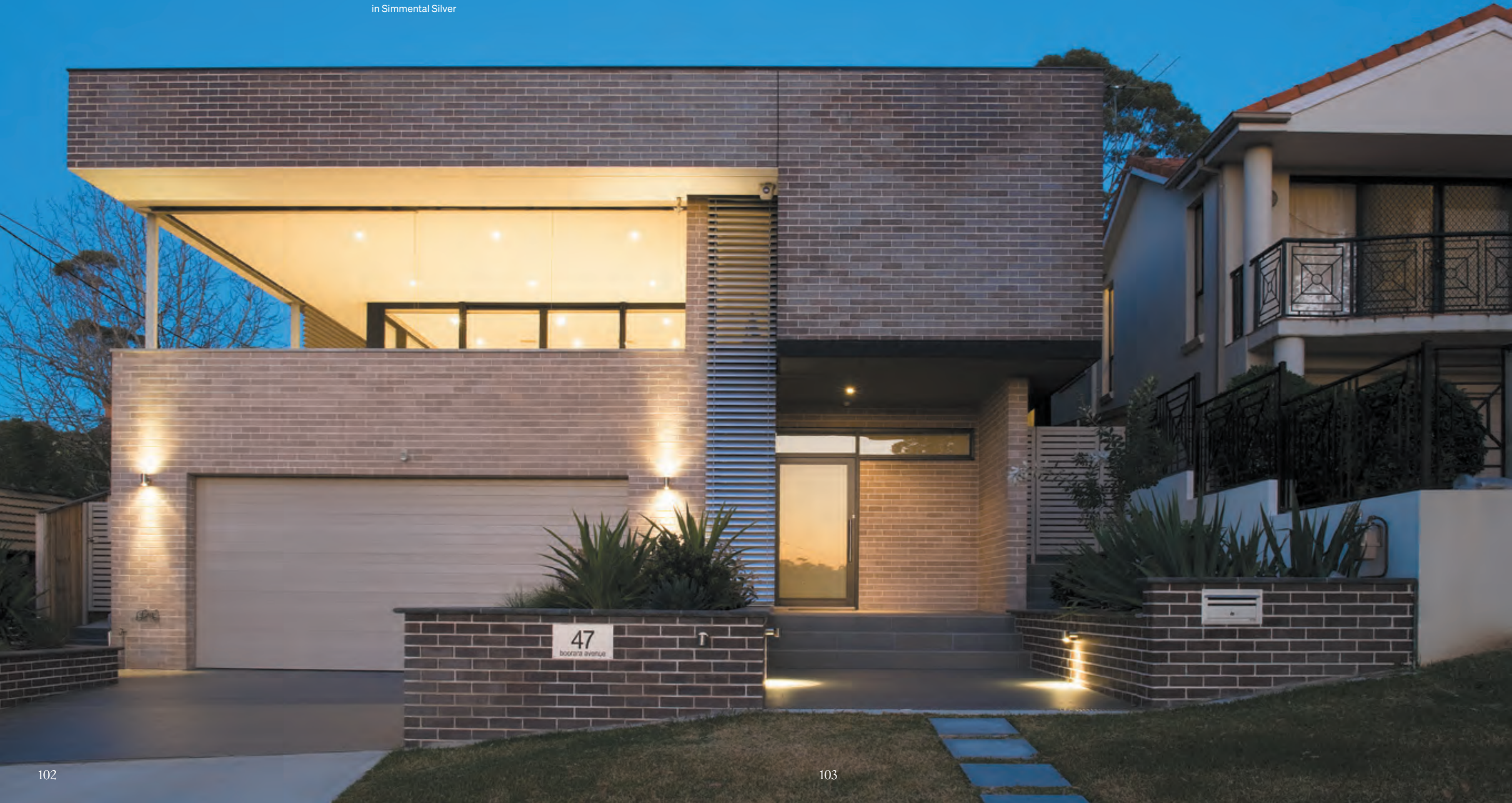
2011
Oatley House

LOCATION
Oatley, NSW

ARCHITECT
Mirjana Males Design

PHOTOGRAPHER
Andrew Krucko and Jacqui Dean

BRICK
Bowral 76,
in Simmental Silver





‘The bricks mirror the palest sandy colours that you’ll find in the adjacent sandstone heritage building. The other reason why we chose that light-coloured brick was to create a contrast with the dark glass openings and to make the geometric concept quite apparent.’

Penny Fuller, Silvester Fuller

2021
18 Loftus Street

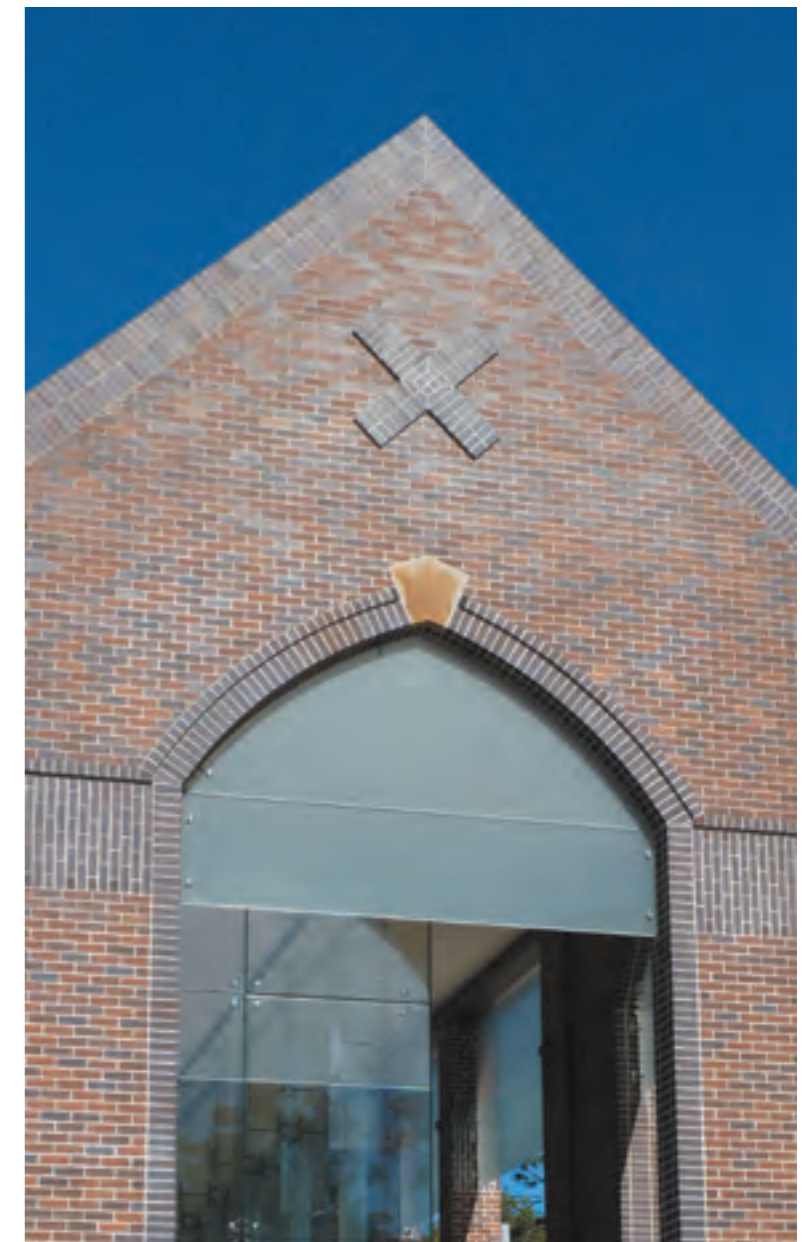
LOCATION
Sydney, NSW

ARCHITECT
Silvester Fuller

PHOTOGRAPHERS
Martin Siegner, Rory Gardiner
and Thomas Walk

BRICK
Bowral 76,
in Chillingham White





2011
Great Hall and Aquatic Centre,
Knox Grammar

LOCATION
Wahroonga, NSW

ARCHITECT
NBRS Architecture

PHOTOGRAPHER
Supplied by NBRS Architecture

BRICK
Bowral 76,
in Shorthorn Mix



2020
Concrete Blonde

LOCATION
Sydney, NSW

ARCHITECT
Carter Williamson Architects

PHOTOGRAPHER
Katherine Lu

BRICK
Bowral 76,
in Chillingham White





2018
Tiger Prawn

LOCATION
Fitzroy North, VIC

ARCHITECT
WOWOWA Architecture

PHOTOGRAPHER
Shannon McGrath

BRICK
Bowral 76,
in Simmental Silver



‘In the spirit of cohesion and reinterpretation of the existing visual language, the weightiness of the bricks was critical. The sculptural silver form exaggerates the verticality of the gesture as it whimsically draws a fortified silhouette in the sky – a man’s home is his castle after all.’

Monique Woodward, WOWOWA





2012
19 James Street

LOCATION
Fortitude Valley, QLD

ARCHITECT
Richards and Spence

PHOTOGRAPHER
Alicia Taylor and Toby Scott

BRICK
Bowral 76,
in Chillingham White





2015
George + Allen

LOCATION
Waterloo, NSW

ARCHITECT
Turner

BUILDER
Built

PHOTOGRAPHER
Brett Boardman

BRICK
Bowral 76,
in Bowral Blue





2011
City Frame House

LOCATION
New Farm, QLD

ARCHITECT
UME Architecture

PHOTOGRAPHER
Jon Linkins

BRICK
Bowral 76,
in Simmental Silver



2016
House Au Yeung

LOCATION
Roseville, NSW

ARCHITECT
Tribe Studio Architects

BUILDER
Daniel Girling-Butcher

PHOTOGRAPHER
Katherine Lu

BRICK
Bowral 76,
in Shorthorn Mix



‘The reason for selecting brick in this project was really a celebration of the existing bungalow and the craft inherent in the brickworks in that house.’

Hannah Tribe, TRIBE Studio



2016
House on Mayfair

LOCATION
Maylands, SA

ARCHITECT
Grieve Gillett Andersen

PHOTOGRAPHER
Sam Noonan

BRICK
Bowral 50,
in Chillingham White





2020
Fish Lane Town Square

LOCATION
South Brisbane, QLD

ARCHITECT
Richards and Spence

PHOTOGRAPHER
David Chatfield

BRICK
Bowral 76,
in Capitol Red



‘The brick on the ground plane really needed to work hard, it needed to be robust. We had a lot of technical requirements for it to go across pedestrian and vehicle zones.’

Ingrid Richards, Richards and Spence



‘Through the depth of the bricks, by corbelling or forming shadows around windows, we were able to make the buildings feel like a solid object.’

Ingrid Richards, Richards and Spence



2017
Centenary Library

LOCATION
East Brisbane, QLD

ARCHITECT
BSPN Architecture

PHOTOGRAPHER
Christopher Frederick Jones

BRICK
Bowral 76,
in Gertrudis Brown





2014
Concord House

LOCATION
Concord, NSW

ARCHITECT
Adam Mosses

BUILDER
OSC Projects

PHOTOGRAPHER
Jacqui Dean

BRICK
Bowral 76,
in Bowral Blue





2017
Edition Apartments

LOCATION
Newcastle, NSW

ARCHITECT
DWP Suters

BUILDER
Bloc

PHOTOGRAPHER
Jamie Gorman

BRICK
Bowral 76,
in Bowral Blue





2019
Stokes 14

LOCATION
Alexandria, NSW

ARCHITECT
Smart Design Studio

PHOTOGRAPHER
Romello Pereira

BRICK
Bowral 300,
in Chillingham White



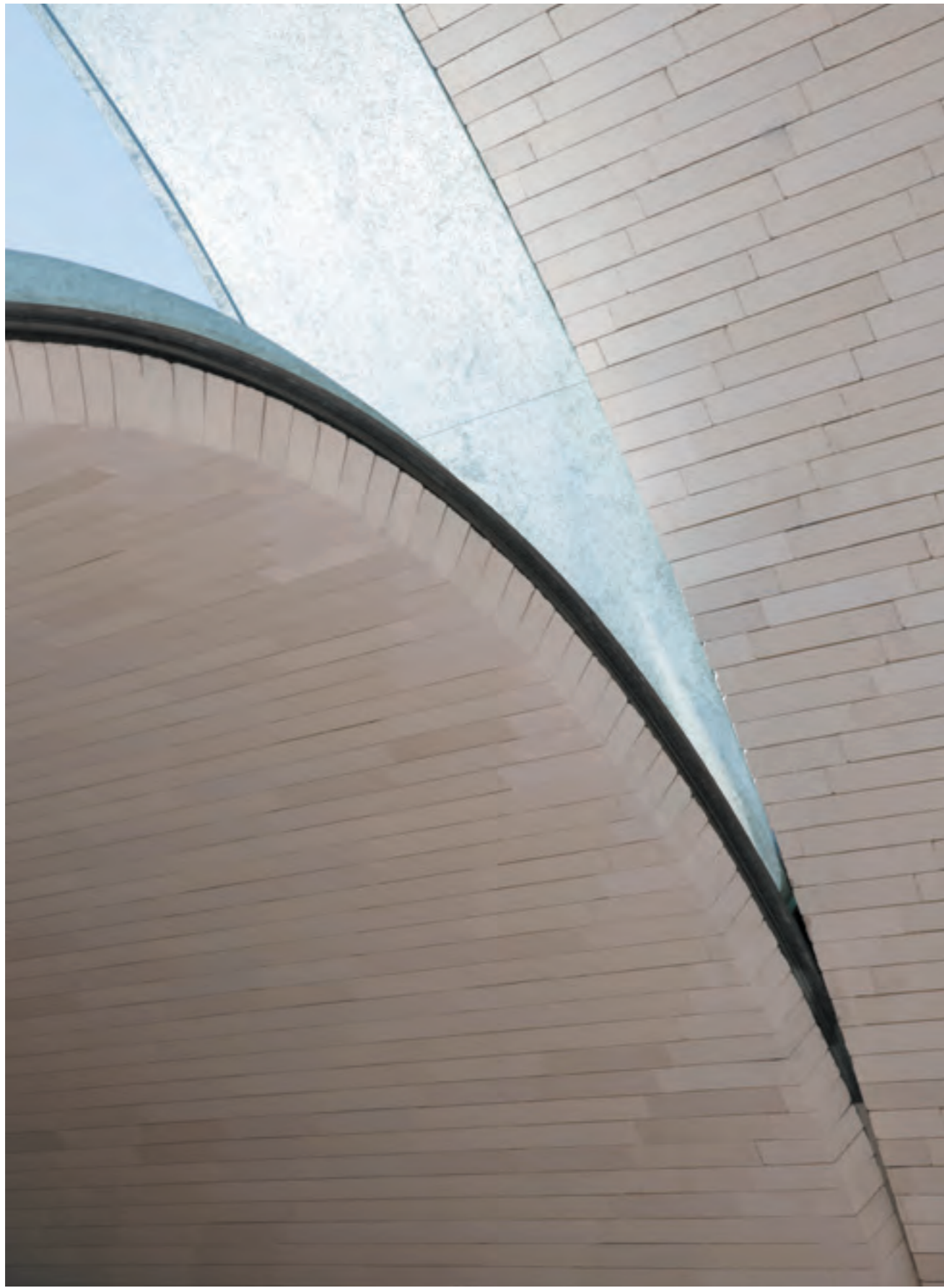
‘There is something I love about brick, its imperfection, I love the precise shapes, like a perfectly shaped catenary vault, combined with a raw material that is chipped and rough, bent, irregular and chalky, and a little bit imperfect. I think that the combination of roughness with precision is beautiful.’

William Smart, Smart Design Studio

'Brick can do things you don't see it do – build vaults and create curved facades, it's a small module that can be put together in beautiful ways.'

William Smart, Smart Design Studio







2017
Spire Residences

LOCATION
Brisbane City, QLD

ARCHITECT
John Wardle Architects

PHOTOGRAPHER
Christopher Frederick Jones

BRICK
Bowral 76,
in Gertrudis Brown, Hereford
Bronze and St Pauls Cream





2008
Five Dock House

LOCATION
Five Dock, NSW

ARCHITECT
Neeson Murcutt + Neille

PHOTOGRAPHER
Peter Miller

BRICK
Bowral 76,
in Bowral Blue





2018
Sefton

LOCATION
Brisbane, QLD

ARCHITECT
Tim Stewart Architects

PHOTOGRAPHER
Christopher Frederick Jones

BRICK
Bowral 76,
in Simmental Silver





2022
Oculus

LOCATION
Darlinghurst, NSW

ARCHITECT
SJB

PHOTOGRAPHER
Felix Forest and Martin Siegner

BRICK
Bowral 300,
in Bowral Blue



2014
Hello House

LOCATION
Richmond, VIC

ARCHITECT
Oof! Architecture

BUILDER
Complete Builders Insight

PHOTOGRAPHER
Nic Granleese

BRICK
Bowral 76,
in Chillingham White







2019
Tigerlily Flagship Store

LOCATION
Sydney, NSW

ARCHITECT
Room on Fire

PHOTOGRAPHER
Sean Fennessy

BRICK
Bowral 50,
in Chillingham White





2021
Carpenter's Square House

LOCATION
Caulfield, VIC

ARCHITECT
Architects EAT

PHOTOGRAPHER
Derek Swalwell

BRICK
Bowral 76,
in Murray Grey

PAVER
Bowral Hamlet,
in Ash





2020
East Fremantle House

LOCATION
Fremantle, WA

ARCHITECT
Nic Brunson

PHOTOGRAPHER
Dion Robeson

BRICK
Bowral 76,
in Simmental Silver



2016
3 Railway Ave

LOCATION
Armadale, VIC

ARCHITECT
Fieldwork

BUILDER
Mancini Made

PHOTOGRAPHER
Tom Ross

BRICK
Bowral 76,
in Chillingham White





2017
Sorrel Street

LOCATION
Paddington, QLD

ARCHITECT
Shaun Lockyer Architect

BUILDER
Cule Construction

PHOTOGRAPHER
Scott Burrows

BRICK
Bowral 76,
in Chillingham White



2021
Highline Westmead

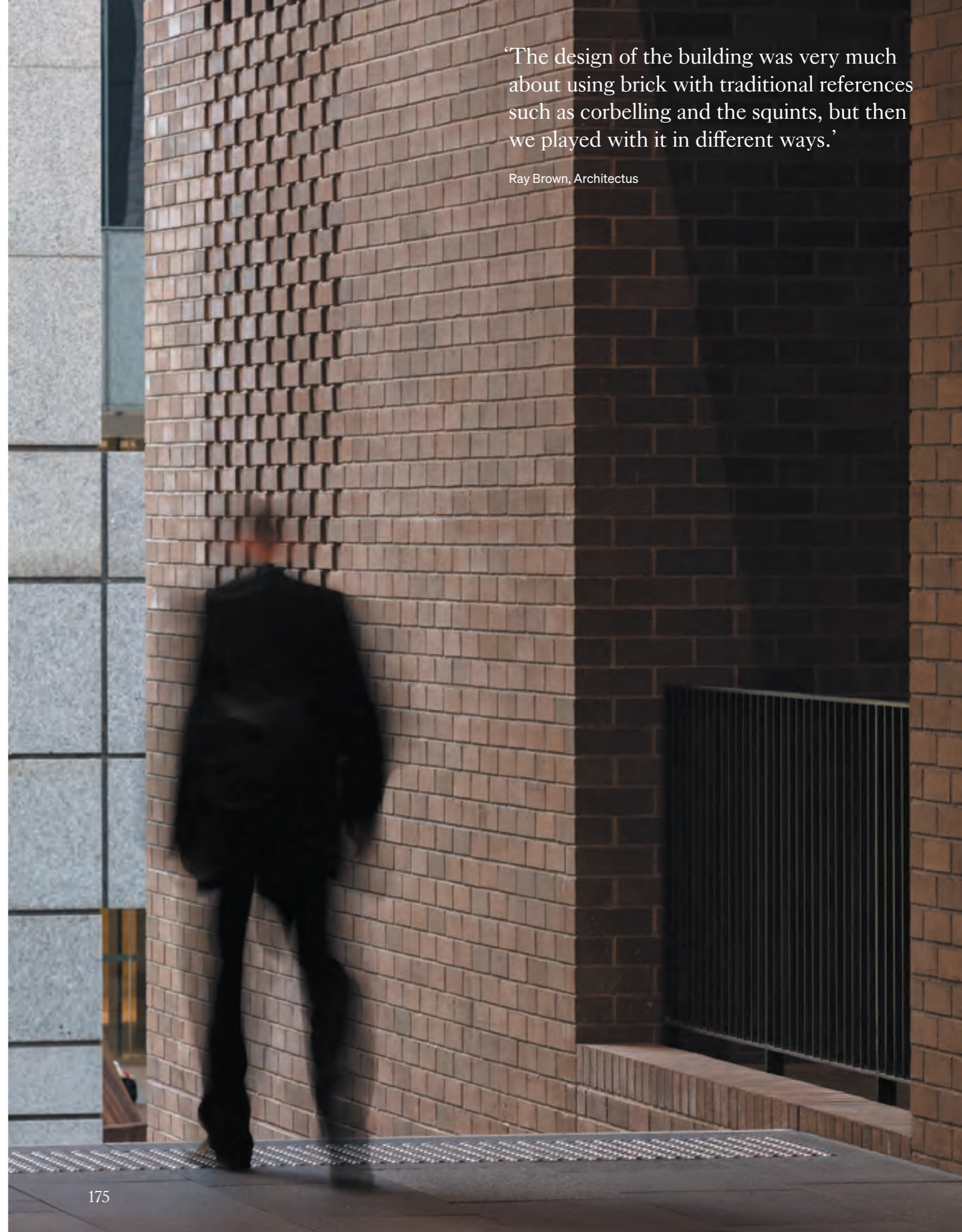
LOCATION
Westmead, NSW

ARCHITECT
Turner

BUILDER
Deicorp

PHOTOGRAPHER
Brett Boardman

BRICK
Bowral 76,
in Bowral Brown



“The design of the building was very much about using brick with traditional references such as corbelling and the squints, but then we played with it in different ways.”

Ray Brown, Architectus

2018
Barrack Place

LOCATION
Sydney, NSW

ARCHITECT
Architectus

PHOTOGRAPHER
Alexander Mayes Photography

BRICK
Bowral 76,
in Bowral Brown



2009
Pantanassa Monastery

LOCATION
Mangrove Creek, NSW

ARCHITECT
Design Delta Architects

PHOTOGRAPHER
Supplied by Design
Delta Architects

BRICK
Bowral 76,
in Bowral Blue, Capitol Red,
Limousin Gold and Murray Grey





2018
Iglu Franklin Street

LOCATION
Sydney, NSW

ARCHITECT
Bates Smart

BUILDER
Hacer

PHOTOGRAPHER
Peter Clarke Photography

BRICK
Bowral 50,
in Simmental Silver





2007
Kensington House

LOCATION
Kensington, NSW

ARCHITECT
Fox Johnston

PHOTOGRAPHER
Brett Boardman

BRICK
Bowral 76,
in Bowral Blue



2020
Circe Circle

LOCATION
Dalkeith, WA

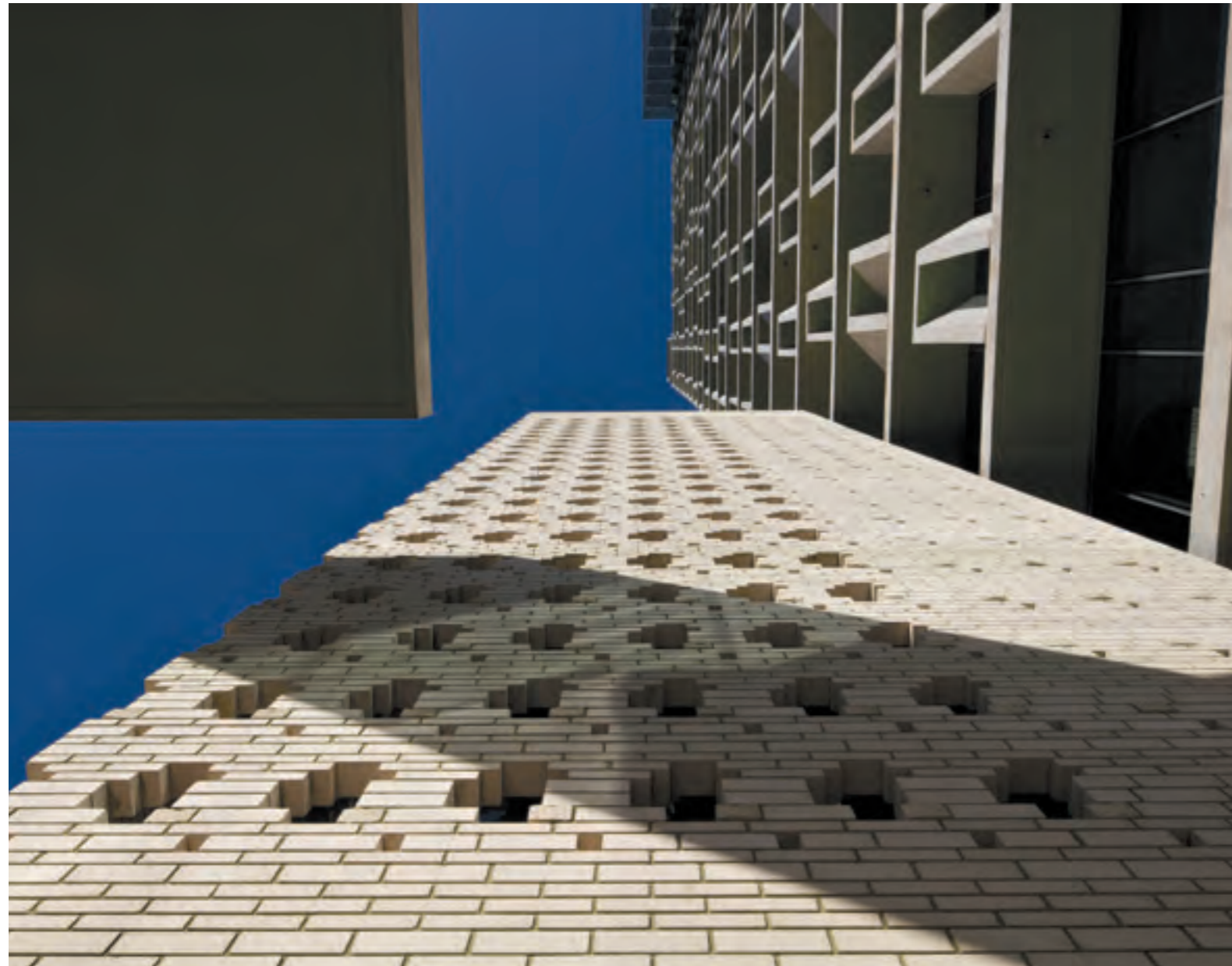
ARCHITECT
Mountford Architects

BUILDER
Mosman Bay Luxury Homes

PHOTOGRAPHER
Dion Robeson

BRICK
Bowral 50,
in Bowral Blue





2010
AM60

LOCATION
Brisbane City, QLD

ARCHITECT
Partners Hill

PHOTOGRAPHER
Sam Thiess and Shantanu Starick

BRICK
Bowral 50,
in Chillingham White

Bowral 76,
in Chillingham White



2011
Coledale House

LOCATION
Coledale, NSW

BUILDER
MGN Projects

PHOTOGRAPHER
Supplied by MGN Projects

BRICK
Bowral 76,
in Bowral Blue



2018
Jacaranda House

LOCATION
Paddington, QLD

ARCHITECT
SP Studio

BUILDER
Rycon

PHOTOGRAPHER
Christopher Frederick Jones

BRICK
Bowral 76,
in Chillingham White





2016
Indigo Slam

LOCATION
Chippendale, NSW

ARCHITECT
Smart Design Studio

PHOTOGRAPHER
Sharrin Rees

BRICK
Bowral 76,
in Simmental Silver





2018
LHI Community Centre

LOCATION
Adelaide, SA

ARCHITECT
Walter Brooke

BUILDER
Sarah Constructions

PHOTOGRAPHER
Supplied by Walter Brooke

BRICK
Bowral 76,
in Gertrudis Brown
Bowral Shapes,
in Gertrudis Brown





2019
West End

LOCATION
Glebe, NSW

ARCHITECT
Turner

BUILDER
Hutchinsons

PHOTOGRAPHER
Mark Syke and Martin Siegner

BRICK
Bowral 76,
in Brahma Granite and
Simmental Silver





2019
House Lincoln

LOCATION
Lane Cove, NSW

ARCHITECT
Those Architects

PHOTOGRAPHER
Luc Rémond

BRICK
Bowral 76,
in Gertrudis Brown







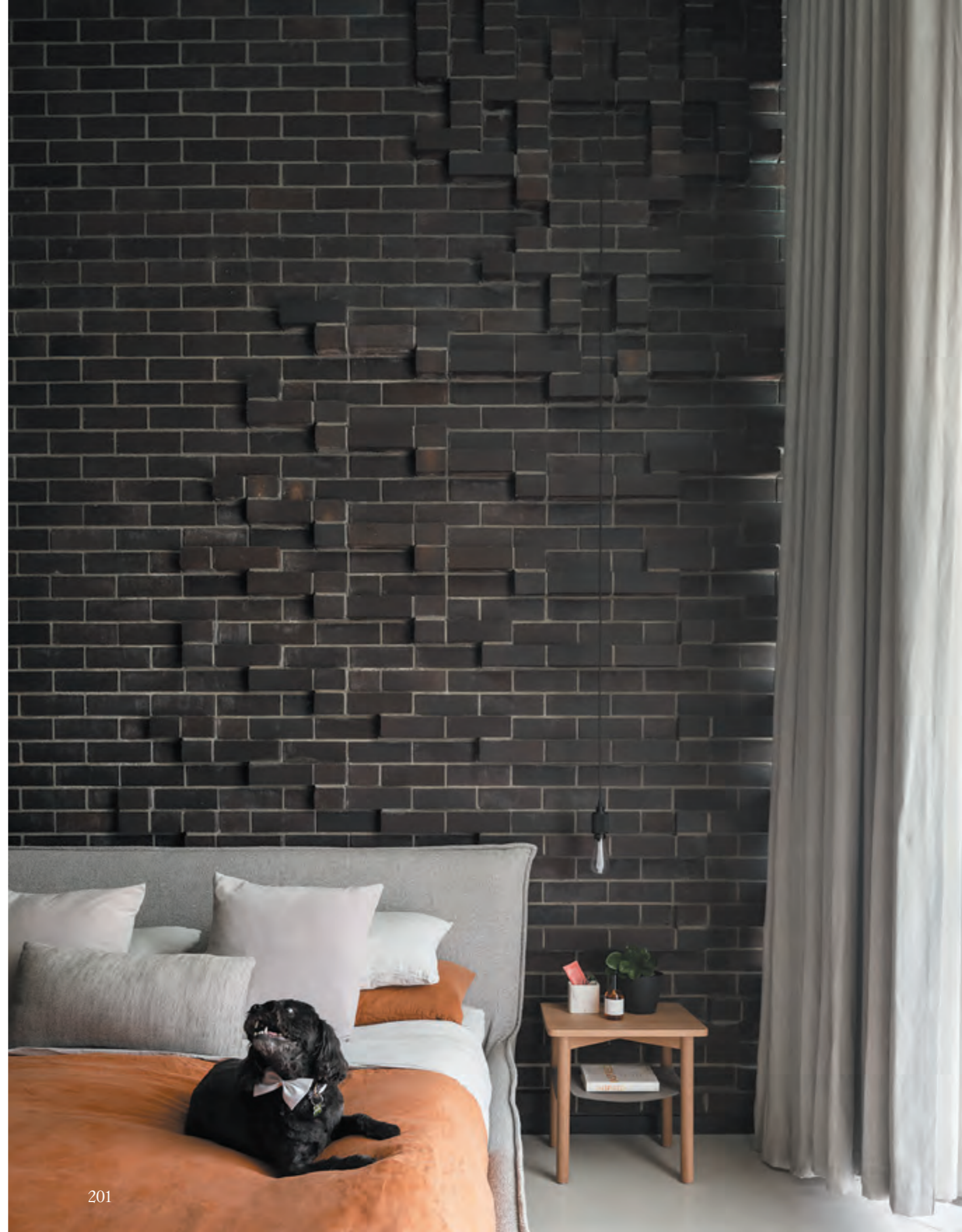
2020
Achour Roberts Residence

LOCATION
Mount Hawthorn, WA

ARCHITECT
Klopper & Davis Architects

PHOTOGRAPHER
Dion Robeson

BRICK
Bowral 76,
in Bowral Blue





2020
Blackwattle Apartments

LOCATION
Glebe, NSW

ARCHITECT
Turner

PHOTOGRAPHER
Brett Boardman

BRICK
Bowral 76,
in Bowral Blue





“The integration between indoors and out inspires a connection with the outdoors, and the low-maintenance brick courtyard is the perfect space for reprieve and reflection.”

Simon Addinall, Those Architects

2021
Beverly Hills

LOCATION
Beverly Hills, NSW

ARCHITECT
Those Architects

BUILDER
Bachalani Constructions

PHOTOGRAPHER
Luc Rémond

BRICK
Bowral 76,
in Chillingham White



2020
511 Botany Road

LOCATION
Zetland, NSW

ARCHITECT
Candalepas Associates

PHOTOGRAPHER
Brett Boardman

BRICK
Bowral 76,
in St Pauls Cream



‘Brick is a beautiful material in that it can’t be perfectly made, I think it’s very relevant in Sydney to reflect what’s underneath the ground. Every single brick is slightly different in colour and that gives a variety of shades, and in parts, it can even be variegated.’

Angelos Candalepas, Candalepas Associates





2022
Concord House

LOCATION
Concord, NSW

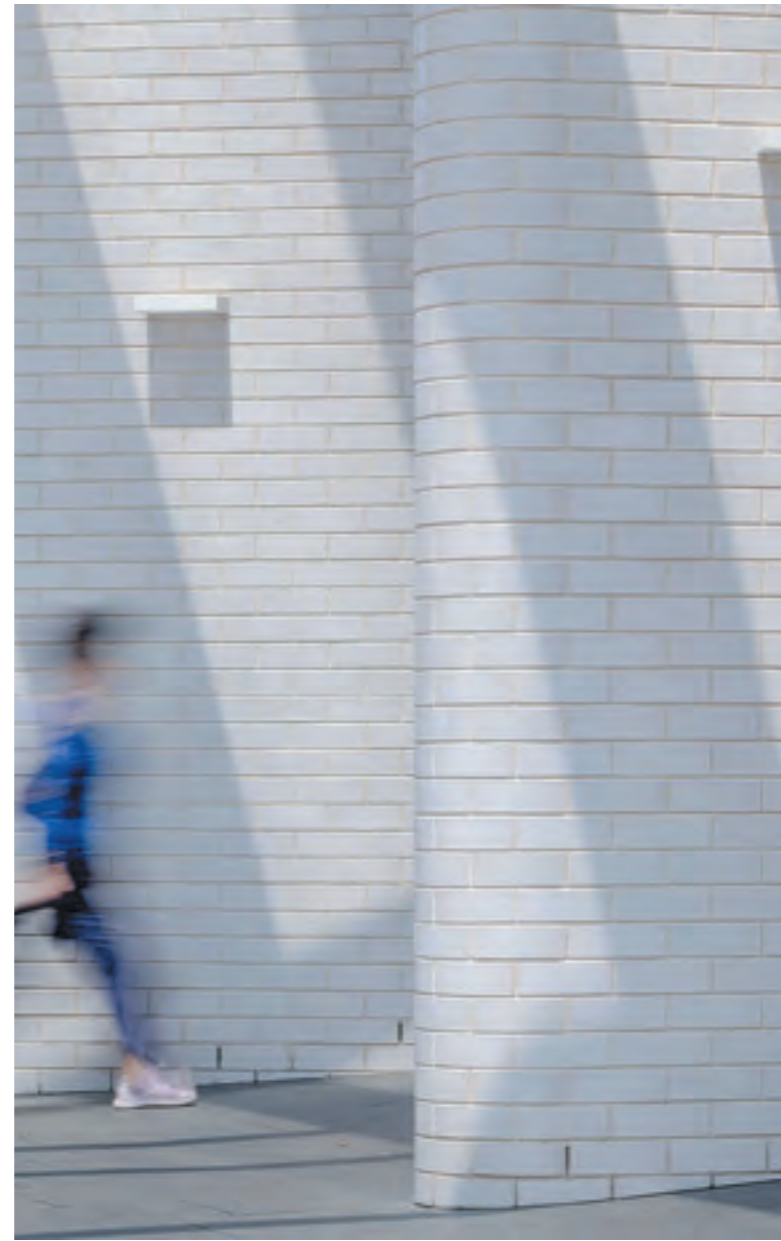
DESIGNER
ES Design

BUILDER
JPH Built

PHOTOGRAPHER
Ryan Linnegar

BRICK
Bowral 50,
in Simmental Silver
Bowral 76,
in Simmental Silver





2019
Darling Square

LOCATION
Surry Hills, NSW

ARCHITECT
Tzannes

PHOTOGRAPHER
Ben Guthrie

BRICK
Bowral 76,
in Bowral Blue and Gertrudis
Brown (Satin finish)



2011
Mabel Fidler Building,
Ravenswood School for Girls

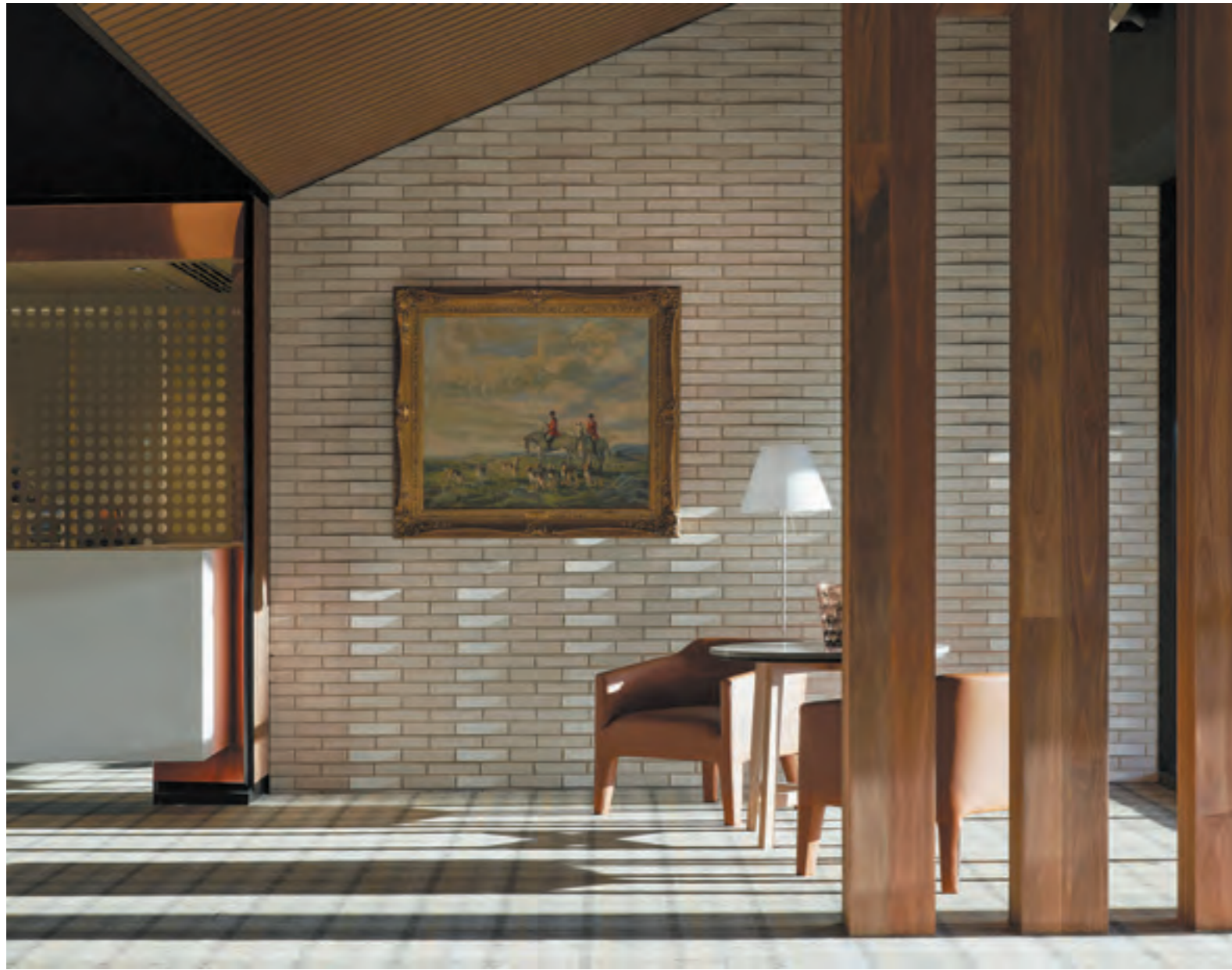
LOCATION
Gordon, NSW

ARCHITECT
BVN

PHOTOGRAPHER
John Gollings

PAVER
Bowral Hamlet,
in Blue





2014
Huntingdale Golf Club

LOCATION
Oakleigh South, VIC

ARCHITECT
Inarc Architects

BUILDER
Pellicano Builders

PHOTOGRAPHER
Peter Clarke Photography

BRICK
Bowral 50,
in Chillingham White





2015
Australian Ballet School

LOCATION
Parkville, VIC

ARCHITECT
MGS Architects

PHOTOGRAPHER
Rhiannon Slatter Photography

BRICK
Bowral 76,
in Simmental Silver





2016
Goodwood Project

LOCATION
Richmond, VIC

ARCHITECT
Rachcoff Vella Architecture

PHOTOGRAPHER
Tatjana Plitt

BRICK
Bowral 76,
in Simmental Silver



2016
Monash University
Earth Science Garden

LOCATION
Melbourne, VIC

LANDSCAPE ARCHITECT
Rush Wright Associates

PHOTOGRAPHER
John Gollings

PAVER
Bowral London,
in Brahman Granite, Chestnut,
Maple, Regency Grey, and
Silver Sand



2017
Finucane

LOCATION
Matraville, NSW

ARCHITECT
Arkhaus Studio

PHOTOGRAPHER
Alexander Mayes Photography

BRICK
Bowral 76,
in Bowral Blue





2017
Mahara Street

LOCATION
Bardon, QLD

ARCHITECT
Tim Stewart Architects

BUILDER
Graya Constructions

PHOTOGRAPHER
Christopher Frederick Jones

BRICK
Bowral 76,
in Simmental Silver





2018
Bowden Bajko House

LOCATION
Colonel Light Gardens, SA

ARCHITECT
Davis+Davis Architects

PHOTOGRAPHER
Sam Noonan

BRICK
Bowral 50,
in Bowral Blue



2016
Barkers Road Townhouses

LOCATION
Melbourne, VIC

ARCHITECT
Kavellaris Urban Design

PHOTOGRAPHER
Capital Images

BRICK
Bowral 76,
in Brahma Granite





2018
Weigall Oval

LOCATION
Plympton, SA

ARCHITECT
JPE Design Studio

PHOTOGRAPHER
Supplied by JPE Design Studio

BRICK
Bowral 76,
in Chillingham White





2017
Chapman Green

LOCATION
Beecroft, NSW

ARCHITECT
PBD Architects

BUILDER
Northpoint Construction Group

PHOTOGRAPHER
Less Hallack

BRICK
Bowral 76,
in Bowral Brown



2016
The Promenade

LOCATION
Parramatta, NSW

ARCHITECT
Smart Design Studio

BUILDER
Probuild

PHOTOGRAPHER
Alexander Mayes

BRICK
Bowral 76,
in Murray Grey





2019
Arlington Grove Apartments

LOCATION
Dulwich Hill, NSW

ARCHITECT
Smart Design Studio

PHOTOGRAPHER
Ross Honeysett

BRICK
Bowral 76,
in Capitol Red







2018
OP9 House

LOCATION
Oran Park, NSW

ARCHITECT
Office88

BUILDER
Auspec Projects

PHOTOGRAPHER
Katherine Lu

BRICK
Bowral 50,
in Chillingham White





2019
Casuarina House

LOCATION
Casuarina, NSW

ARCHITECT
Vokes and Peters

PHOTOGRAPHER
Christopher Frederick Jones

BRICK
Bowral 76,
in Chillingham White





2020
Bellows House

LOCATION
Flinders, VIC

ARCHITECT
Architects EAT

PHOTOGRAPHER
Derek Swalwell

PAVER
Bowral Hamlet,
in Sepia



‘From the beginning of the design journey
I wanted to design something that is
permanent. You know this building, or this
house, is designed for 100 years.’

Albert Mo, Architects EAT

2020
Kurrajong Centre
for Senior Learning

LOCATION
Springfield, QLD

ARCHITECT
Fulton Trotter

PHOTOGRAPHER
Scott Burrows

BRICK
Bowral 76,
in Simmental Silver





2021
Park Sydney Apartments

LOCATION
Erskineville, NSW

ARCHITECT
WMK Architecture

BUILDER
Richard Crookes

PHOTOGRAPHER
Alexander Mayes Photography

BRICK
Bowral 76,
in Bowral Blue

PAVER
Bowral London,
in Blue, Chestnut and Maple





2005
Gillian Moore Centre
for Performing Arts

LOCATION
Pymble, NSW

ARCHITECT
PMDL Architects & Design

PHOTOGRAPHER
Supplied by PMDL
Architects & Design

BRICK
Bowral 76,
in Bowral Blue and Shorthorn Mix





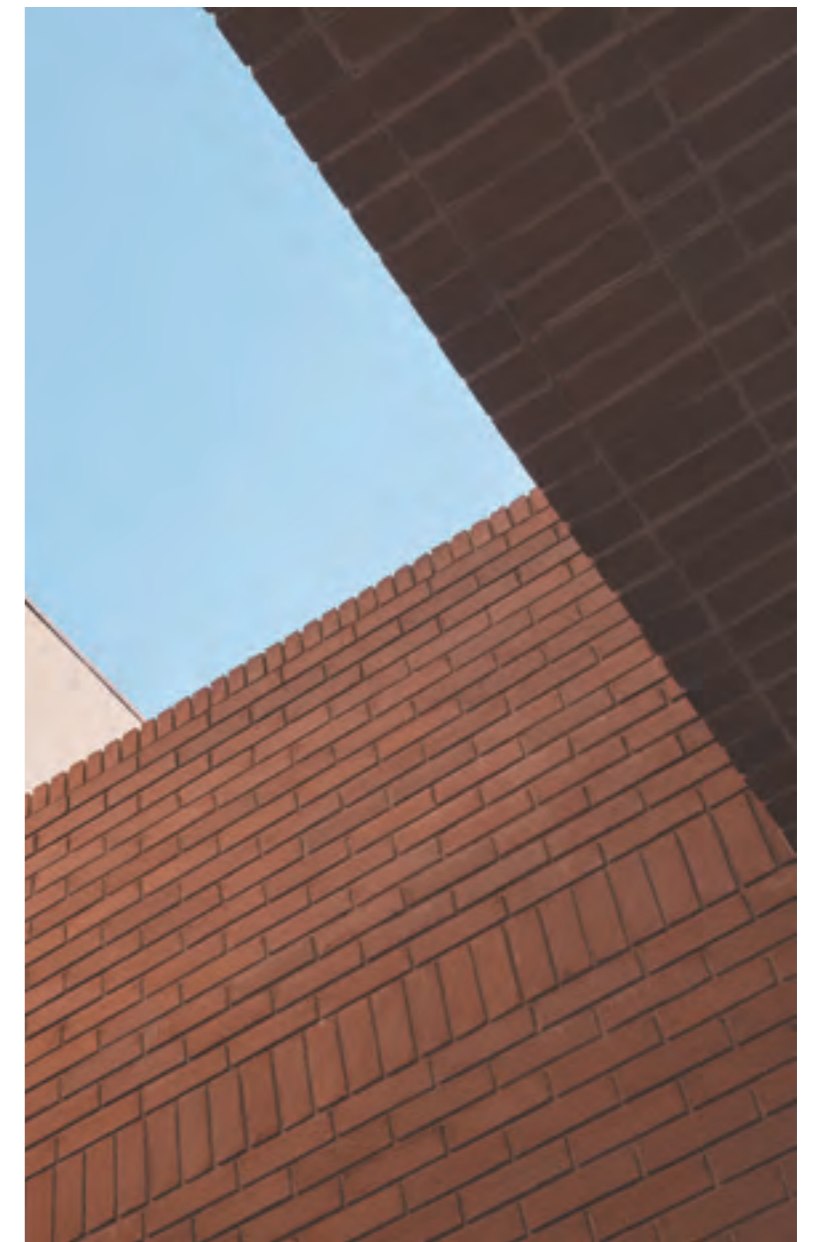
2021
Incu HQ

LOCATION
Rosebery, NSW

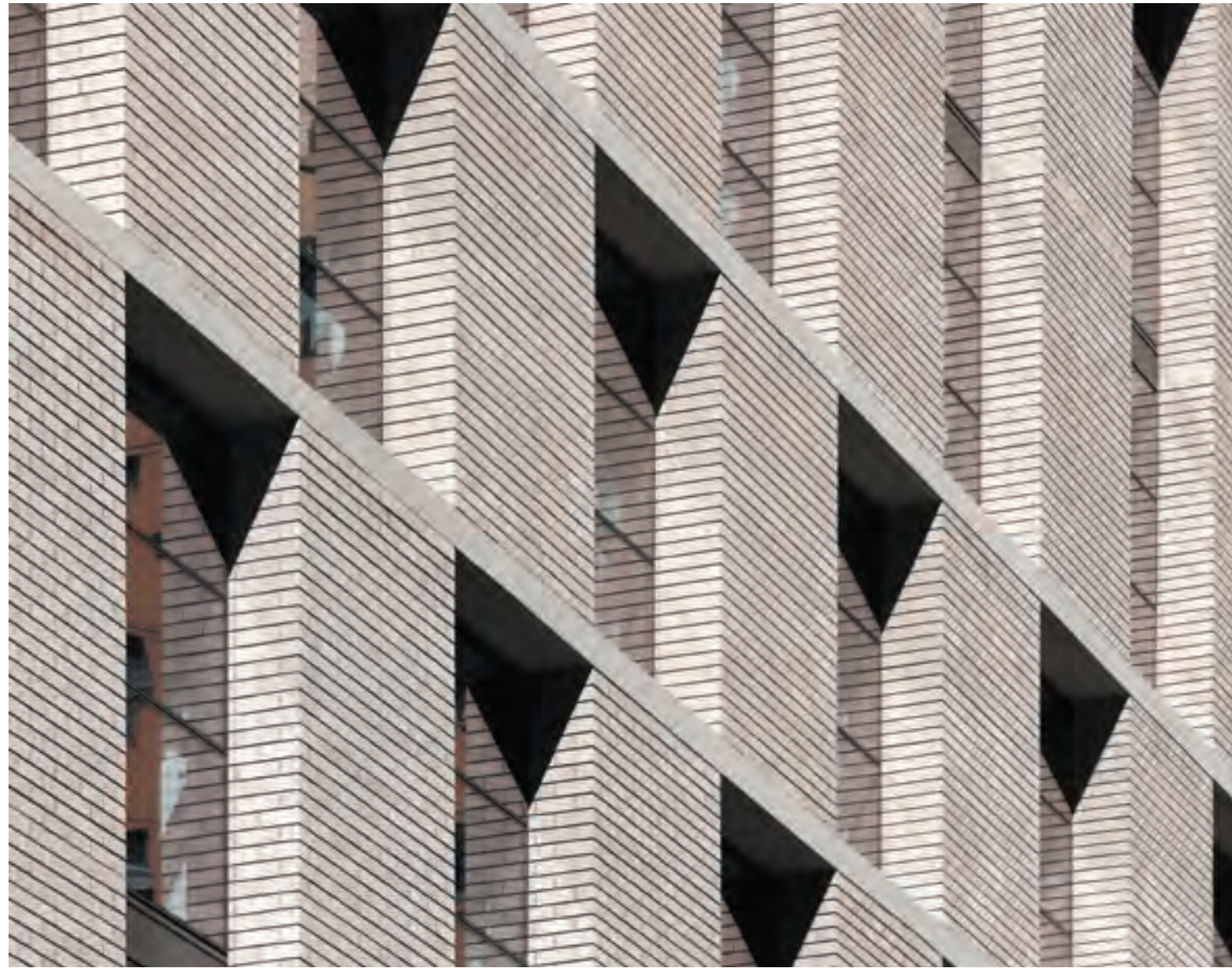
ARCHITECT
Akin Atelier

PHOTOGRAPHER
Terence Chin Photography

BRICK
Bowral 76,
in Capitol Red







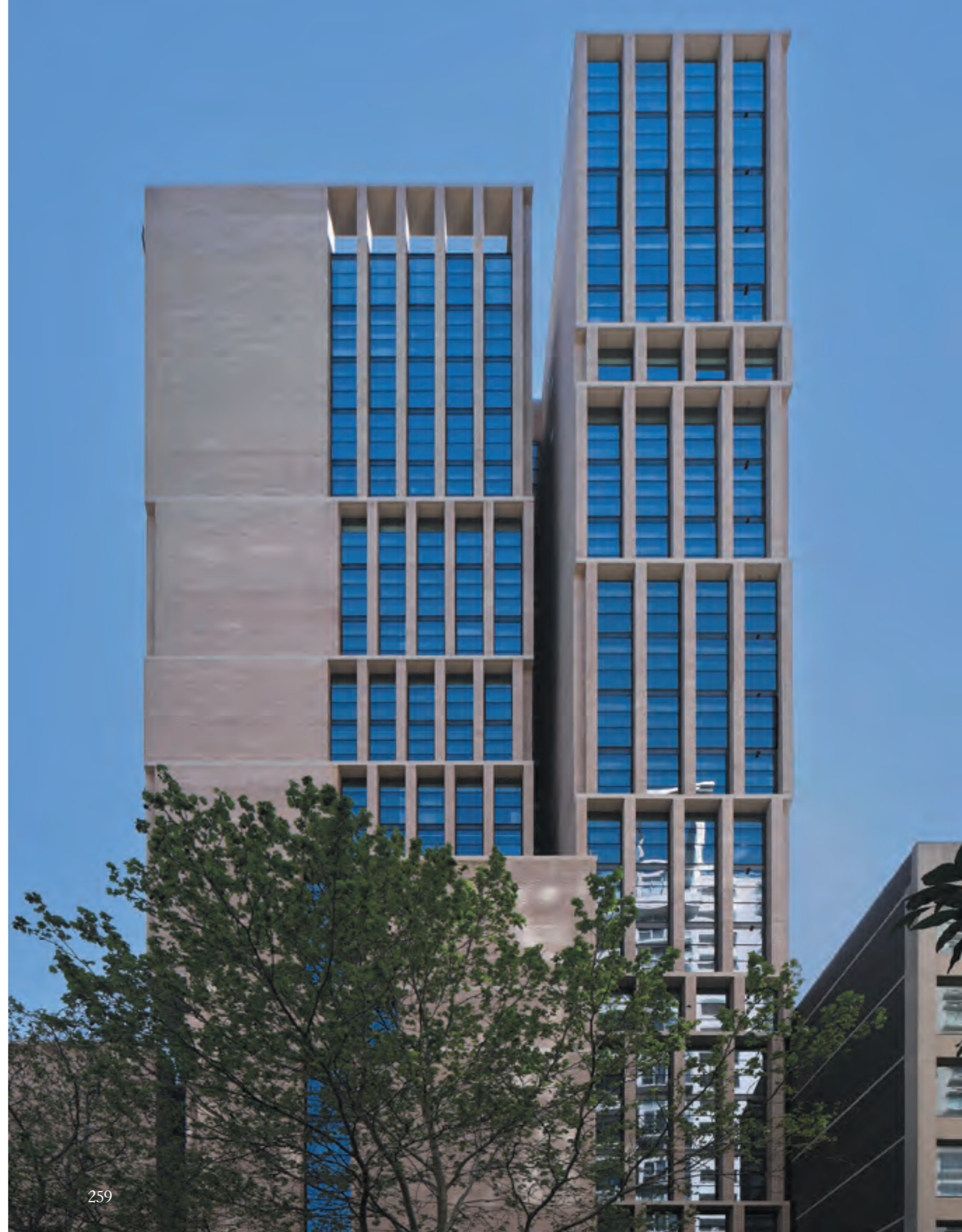
2020
Sussex 286

LOCATION
Sydney, NSW

ARCHITECT
Smart Design Studio

PHOTOGRAPHER
Romello Pereira

BRICK
Bowral 76,
in Simmental Silver





04

Catalogue





These distinctive dry pressed bricks made at our Bowral plant have been used in many of Australia's most admired and historic buildings. With their unique granular patina and tactile aesthetic, Bowral bricks are highly prized by customers, architects and designers alike, and set the standard for design and integrity. Their sharp edges and inherent character combine with the distinctive Bowral clay colours to create what can only be a Bowral Brick. The extensive colour palette covers the spectrum from the pale and soft Chillingham white and cool silvers through the palette of golds, orange and red hues to the highly sought after Granite and Bowral Blue.

COLOURS

- Bowral Blue
- Bowral Brown
- Brahman Granite
- Capitol Red
- Chillingham White
- Embassy Red
- Gertrudis Brown
- Hereford Bronze
- Limousin Gold
- Murray Grey
- Renovation Gertrudis Brown
- Shorthorn Mix
- Simmental Silver
- St Pauls Cream



The sleek, low profile Bowral 50 (a 50mm high brick) is our response to contemporary design trends and offers architects and builders a greater range of versatility. The slimline profile of Bowral 50 creates an elongated linear form in contemporary brickwork, appearing to lengthen the wall, adding sophistication and elegance to the design.

COLOURS

- Bowral Blue
- Bowral Brown
- Brahman Granite
- Capitol Red
- Chillingham White
- Embassy Red
- Gertrudis Brown
- Hereford Bronze
- Limousin Gold
- Murray Grey
- Renovation Gertrudis Brown
- Shorthorn Mix
- Simmental Silver
- St Pauls Cream

Bowral 300



For added elegance and simplicity, the Bowral 300 range provides an even longer version of the Bowral 50, taking the effect to the next level. These bricks are rare and intended to make a statement about quality and design for superior projects that occupy a class of their own.

COLOURS

Bowral Blue
Bowral Brown
Brahman Granite
Capitol Red
Chillingham White
Embassy Red
Gertrudis Brown
Hereford Bronze
Limousin Gold
Murray Grey
Renovation Gertrudis Brown
Shorthorn Mix
Simmental Silver
St Pauls Cream

Bowral Satin



Bowral Satin is an extraordinary collection, each brick the result of a grinding and polishing process that exposes the true depth of clay colour in the brick. With their super smooth and high sheen polished surface they're guaranteed to captivate the most style conscious designer. Bowral Satin is available in all sizes and in the full array of Bowral colours.

COLOURS

Bowral Blue
Bowral Brown
Brahman Granite
Capitol Red
Chillingham White
Embassy Red
Gertrudis Brown
Hereford Bronze
Limousin Gold
Murray Grey
Renovation Gertrudis Brown
Shorthorn Mix
Simmental Silver
St Pauls Cream

Bowral Blends



A firm favourite for over 100 years, this enduring Australian classic with a refreshing update, with new styles to suit any project that requires beautiful, long-lasting designs. The result of generations of local brickmaking expertise, combined with both timeless contemporary colour selections, Bowral Blends are specifically created to add confidence and a touch of refined luxury to any building project. Often used to add design depth to commercial projects due to their colour variations and vibrantly rich tones, they are both a historical reminder of Australian brick making heritage, coupled with forward-thinking sustainability.

COLOURS

Burradoo

Bargo

Exeter

Berrima

Kangaloon

Bowral Highlands



Using clay sourced from the Southern Highlands of New South Wales, these tactile creations are blended by our master brick-makers to spectacular effect. Bowral Highlands offers shades that morph from light to dark, with natural seams of colour within each brick. These expressive veins result in a crafted brick unlike any other; the perfect balance of form, function and enduring class.

COLOURS

Bangadilly

Jellore

Meryla

Natti

Penrose

Tarlo

Wingello

Woodlands

Sutton (Blends)

Burrawang (Rumbled)

Welby (Rumbled)

Bowral Gable



These bespoke bricks don't just lend themselves to high-end projects they're a clever way to add a touch of creative detailing that knits together form and surface. Available in our full range of Bowral Bricks colours and shapes, these bricks can be used in either stack or stretcher bond to enhance shadowing effects in sunlight or indoors.

COLOURS

- Bowral Blue
- Bowral Brown
- Brahman Granite
- Capitol Red
- Chillingham White
- Embassy Red
- Gertrudis Brown
- Hereford Bronze
- Limousin Gold
- Murray Grey
- Renovation Gertrudis Brown
- Shorthorn Mix
- Simmental Silver
- St Pauls Cream

Bowral Shapes



Bowral Shapes are used in conjunction with standard bricks, adding distinctive architectural features to any project. Unusual and stylish, they evoke memories of an earlier age when the artisan bricklayer was able to use distinctive 'shapes' in their work in buildings that today are considered heritage and of great value.

COLOURS

- Bowral Blue
- Bowral Brown
- Brahman Granite
- Capitol Red
- Chillingham White
- Embassy Red
- Gertrudis Brown
- Hereford Bronze
- Limousin Gold
- Murray Grey
- Renovation Gertrudis Brown
- Shorthorn Mix
- Simmental Silver
- St Pauls Cream

Bowral London Pavers



Our London range of dry pressed pavers will transform your outdoor courtyard or landscaping with their quality and durability. This versatile paving solution comes in an extensive colour palette for endless design possibilities.

COLOURS

Bowral Blue

Brahman Granite

Chestnut

Maple

Regency Grey

Silver Sand

Bowral Hamlet Pavers



Set your project apart with the architecturally inspired Hamlet pavers that can be used indoors or outside. This paver is unique in size and available in Bowral's unforgettable colour range.

COLOURS

Ash

Blue

Sepia



Drawing inspiration from the elegant streetscapes of Sydney's beautiful and historic suburbs, Bowral Remastered provides the colours and textures that are often created by exposing existing brick structures. The techniques employed to make this collection allow for a vintage effect to be created in new commercial and residential architecture.

Distressed forms and blended colours provide a finish similar to recycled bricks, but with the guarantee of no contaminants, greater strength and clarity around embodied energy. Best installed with a flush struck joint, Bowral Remastered are made to order, to avoid waste and carefully blended to suit project requirements. Tell a rich and timeless story with Bowral Remastered.

COLOURS

Gibraltar

Hume

Moss Vale

Oxley

St Jude

St Simon

Westow

Wingecarribee

A



Adam Mosses
Concord House
p.136



Akin Atelier
Incu HQ
p.254



Alison Dodds Architect
Wedged House
p.88



Architects EAT
Bellows House
p.246



Architects EAT
Carpenter's Square House
p.162



Architectus
Barrack Place
p.174



Architectsmith
Chisholm House
p.40



Arkhaus Studio
Finucane
p.224

B



Bates Smart
Iglu Franklin Street
p.178



Benn+Penna Architects
Henley Clays
p.90



Blight Rayner Architects
and Twofold Studio
Aperture House
p.30



BSPN Architecture
Centenary Library
p.134

C



BVN Australian Embassy p.64	BVN Mabel Fidler Building, Ravenswood School for Girls p.214	Candalepas Associates 511 Botany Road p.206	Carter Williamson Architects Concrete Blonde p.110	Chenchow Little Stewart House p.42	Clare Cousins Architects Elsterwick House p.56
-----------------------------------	---	---	--	--	--

D



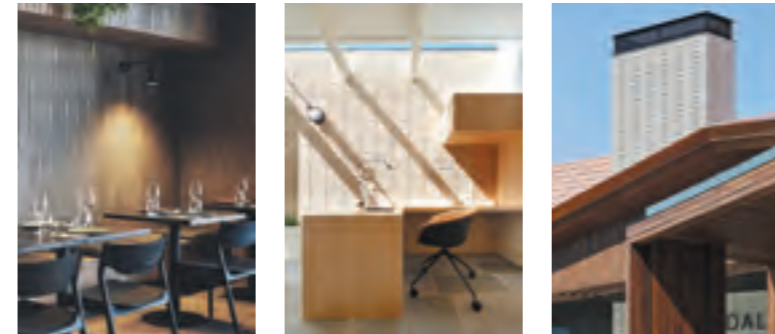
Clare Cousins Architects Garden Room House p.78	Davis+Davis Architects Bowden Bajko House p.228	Deicke Richards Crescent House p.54	Design Delta Architects Pantanassa Monastery p.176	DWP Suturs Edition Apartments p.138	Ellivo St Paul's Terrace p.100
---	---	---	--	---	--------------------------------------

F



ES Design Concord House p.210	Fieldwork 3 Railway Ave p.168	FJMT Studio Agricultural Education Building, Armindale University p.46	Fox Johnston Kensington House p.180	Fulton Trotter Kurrajong Centre for Senior Learning p.248	Gehry Partners Dr Chau Chak Wing Building, University of Technology Sydney p.34
-------------------------------------	-------------------------------------	--	---	--	---

I



Genesin Studio Antica Pizzeria E Cucina p.74	Grieve Gillet Andersen House on Mayfair p.126	Inarc Architects Huntingdale Golf Club p.216
--	---	--

J



Iredale Pedersen Hook Rockingham Trade Training Centre p.44	Jackson Clements Burrows Architects York Street Residence p.48	John Wardle Architects Spire Residences p.146
--	---	---

K



JPE Design Studio Weigall Oval p.232	Kavellaris Urban Design Barkers Road Townhouses p.230	Kerry Hill Architects State Theatre Centre of Western Australia p.32	Klopper & Davis Architects Leederville House p.62	Klopper & Davis Architects Achour Roberts Residence p.200	Koichi Takada Architects Arc by Crown p.84
--	---	---	---	---	--

L



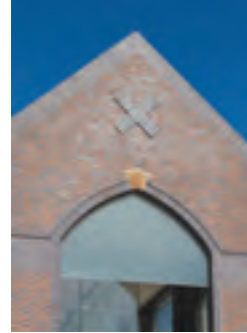
Liquid Blu Architects Gympie Aquatic Recreation Centre p.68	Lyons Architects Springvale Community Hub p.60
--	--

M



MGS Architects Australian Ballet School p.218	Mirjana Males Design Oately House p.102	Mountford Architects Circe Circle p.182	MGN Projects Coledale p.186
---	---	---	-----------------------------------

N



NBRS Architecture
Great Hall and Aquatic Centre, Knox Grammar
p.108



Neeson Murcutt + Neille
Five Dock House
p.148



Nic Brunson
East Fremantle House
p.166



O'Neill Architecture
Kingsford Terrace
p.96



Office88
OP9 House
p.242



Oof! Architecture
Hello House
p.156

O

P



Partners Hill
AM60
p.184



PBD Architects
Chapman Green
p.234



Placement Studio and Nest
Garden House
p.80



PMDL Architects & Design
Gillian Moore Centre for Performing Arts
p.252

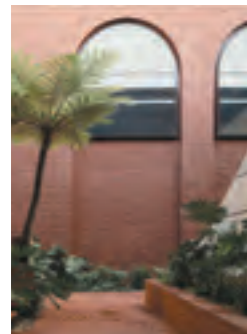


Rachcoff Vella Architecture
Goodwood Project
p.220

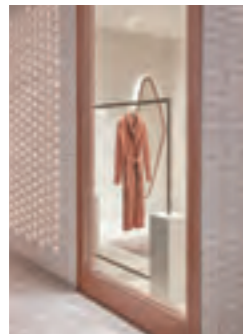


Richards and Spence
19 James Street
p.116

S



Richards and Spence
Fish Lane Town Square
p.128



Room on Fire
Tigerlily Flagship Store
p.160



Rush Wright Associates
Monash University Earth Science Garden
p.222



SJB
Oculus
p.154



Shaun Lockyer Architect
Sorrel Street
p.170



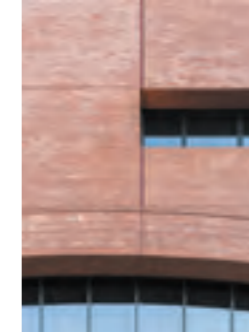
Silvester Fuller
18 Loftus Street
p.104



Smart Design Studio
Arlington Grove Apartments
p.238



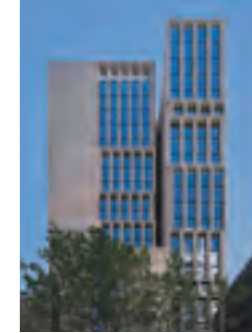
Smart Design Studio
Indigo Slam
p.190



Smart Design Studio in collaboration with Jacobs
Rail Operations Centre
p.26



Smart Design Studio
Stokes 14
p.140



Smart Design Studio
Sussex 286
p.258



Smart Design Studio
The Promenade
p.236



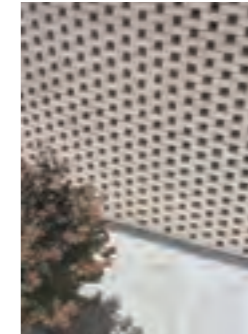
Smith+Tracey Architects
Thomas Carr College Chapel
p.38



SP Studio
Jacaranda House
p.188



Studio Bright
Little Brick Studio
p.72



Those Architects
Beverly Hills
p.204



Those Architects
House Lincoln
p.196



Tim Stewart Architects
Mahara Street
p.226

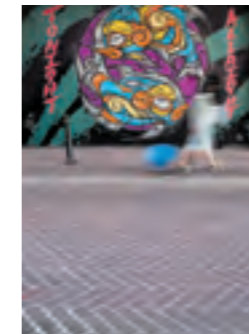
T



Tim Stewart Architects
Sefton
p.150



Tribe Studio Architects
House Au Yeung
p.124



Turf Design Studio
Kensington Street
p.94



Turner
Blackwattle Apartments
p.202



Turner
George+Allen
p.120



Turner
Highline Westmead
p.172

U

V

W



Turner

West End

p.194



Tzannes

Darling Square

p.212



UME Architects

City Frame House

p.122



Vanessa Wegner Architect

Longueville House

p.52



Vokes and Peters

Casuarina House

p.244



Walter Brooke

LHI Community Centre

p.192



WMK Architecture

Park Sydney Apartments

p.250



Woods Bagot

83 Pirie Street

p.98



WOWOWA Architecture

Tiger Prawn

p.112

